



A NOTE FROM RABBI VALERIE

"Do not separate yourself from the community" - Hillel

I received a beautiful email from someone I met at an art journaling retreat this summer. We were the only Jews there, and once I "confessed" that I was a rabbi, we ended up talking about her congregation. Ever since the long-time rabbi had left – the one who officiated at her mother's funeral right before High Holidays last year – she just hadn't felt connected. Perhaps it was because she always attended services with her mom, and she couldn't do that anymore.

On Yom Kippur, she saw our services appear on Facebook and found herself watching. She said she felt the warmth of our community even through the camera, and she was almost moved to tears from Gitit's musical leadership. She also said I looked a lot different in a white robe on the bema than I did in jeans and covered in paint.

My friend isn't the only person who belongs to one congregation and attends services online with another – or with multiple different congregations.

So why belong to a congregation at all? I could say that the rabbi from the congregation in New York City or LA isn't going to visit you in the hospital in Worcester, or officiate at your wedding or child's baby naming, or the funeral of a relative; and that is all true. But more than that, by being involved in your local Jewish community – at Temple Emanuel Sinai – you can develop a group of friends who will check in on you, ask you to lunch, attend your life cycle events to celebrate with you or to give you support.

In the past, caring committees have often taken this role of giving support to families. Recently, a few people came up with the idea of different groups in the congregation caring for each other instead of a caring committee making "cold calls" to people they don't always know. So, if someone on the board is having challenges or celebrating a simcha, board members can reach out to them. And the same for the Mahjong group. And the Film Affinity Group. And the Torah Study regulars. And so on. A lot of this is already happening organically at TES. It would be lovely if it happened intentionally, with guidelines to help the groups. (Would YOU like to volunteer to set that up?)

But what if you're not part of any groups at temple? That's easy! Start your own. Do you love horseback riding? You're not the only one. We can find you a few others to start a small group. What about bourbon connoisseurs? I know you're out there... we can gather you into a group and point you in the direction of this new Jewish podcast about bourbon. Do you knit? Crochet? Do other arts or crafts? Run marathons? Golf? Bowl? Or something else...? We have at least 2 or 3 people in our congregation who enjoy each one of these things – I know it for a fact. If you're interested in finding others who enjoy the same hobby as you, let us know, and we'll get you connected. Contact me or the temple office and we'll direct you to the right person.

Community is more than services. Sure, we hope you will attend Shabbat services at Temple Emanuel Sinai every week. But, most of all, we hope you will find our congregation to be a place of meaning and connection in whatever way works for you.



PRESIDENT'S MESSAGE

Don't forget...

Someone I spoke to during one of my High Holiday calls reinforced everything I spoke about in my Rosh Hashanah speech...the same people always do everything. While I really wanted to ask this person to step up themselves, since they would be someone new and different, I understood. There are various reasons why people don't step up, I know. But as I said in that speech, being Jewish at Temple Emanuel Sinai is not a spectator sport. I really don't want you to forget!

We can support this beautiful and vital Jewish community by being involved! We have so many ways to be there for each other. Come to a Lifelong Learning/Brotherhood Breakfast on a Sunday morning, join in the Monday evening minyan, come to a Friday night service, join a committee, start a committee, become part of an affinity group (which includes Mahjong on Sunday), help the Greening Committee clean up after an event. If none of these appeals to you, give us some suggestions! What will pique your interest enough to get you here?

I was serious when I said we needed to get back in the building. We need to schmooze, to bond, to help each other, to know each other again. Chanukah is coming. Time flies these days, and it will be here fast. Plans are being made; a group is forming to make something happen. I'm sure that they would love some new folks to come up with and share new ideas. Greeting on Friday nights as well as honors doing candles and Kiddush are available. Call the office and volunteer! You can even do candles and Kiddush on Zoom. Help sponsor an oneg on Friday nights if you have a special occasion like a birthday or an anniversary.

Just please don't say you don't know anyone. You will never know anyone if you don't make the first move. This is a congregation full of wonderful people worth knowing - people who are not the same old people. I'm hoping I meet you at TES soon.

And one more thing I really don't want you to forget...our Veterans. This newsletter will come out in November, the month of Veterans' Day. We need to remember our Veterans and thank them for their service. Many of them have returned with not only physical ailments they will deal with for life, but with emotional problems that can sometimes be worse than anything physical. We can speak out in this country because of what these people have done for us. Although we are in turmoil at times, we can always make our opinions known. There are many reasons people join the military, but the one thing they all end up doing is keeping this country free, and that means everything.

L'Shalom,
Paula Selvitella, President



MUSIC NEWS

Wow! What a journey we had together these past few weeks. Such fulfilling and meaningful Rosh Hashana and Yom Kippur services. Sukkot and Simchat Torah are now behind us, and we will continue the next part of the year while enjoying the beauty of the autumn foliage. I am looking forward to our exciting musical activities this year, to celebrate our B'nai Mitzvah, and enjoy our Pray and Play Saturdays with the wonderful TES families.

I wish you all a happy, healthy, successful, and fruitful year!
May we continue to pray together through music and harmony.

Gitit

NOVEMBER - DECEMBER WORSHIP SERVICES

LECH LECHA

Friday, November 4th
Candle Lighting at 5:19pm
7:30pm Shabbat Service
Saturday, November 5th
EARLY 9:00AM Torah Study
Genesis 12:1-17:27
Eli Smith Bar Mitzvah 10:30am

VAYERA

Friday, November 11th
Candle Lighting at 4:11pm
7:30pm Shabbat Service
Saturday, November 12th
10:30am Torah Study
Genesis 18:1-22:24

CHAYEI SARAH

Friday, November 18th
Candle Lighting at 4:05pm
7:30pm Shabbat Service
Saturday, November 19th
10:30am Torah Study
Genesis 23:1-25:18

TOLDOT

Friday, November 25th
Candle Lighting at 4:00pm
7:30pm Shabbat Service
Saturday, November 26th
10:30am Torah Study
Genesis 25:19-28:9

VAYETZE

Friday, December 2nd
Candle Lighting at 3:58pm
7:30pm Shabbat Service
Saturday, December 3rd
10:30am Torah Study
Genesis 28:10-32:2

VAYISHLACH

Friday, December 9th
Candle Lighting at 3:57pm
7:30pm Shabbat Service
Service led by Religious School
Saturday, December 10th
10:30am Torah Study
Genesis 32:3-36:43

VAYESHEV

Friday, December 16th
Candle Lighting at 3:58pm
7:30pm Shabbat Service
Saturday, December 17th
10:30am Torah Study
Genesis 37:1-40:23

MIKETZ

Friday, December 23rd
Candle Lighting at 4:01pm
7:30pm Shabbat Service
Saturday, December 24th
10:30am Torah Study
Genesis 41:1-44:17

VAYIGASH

Friday, December 30th
Candle Lighting at 4:06pm
7:30pm Shabbat Service
Saturday, December 31st
10:30am Torah Study
Genesis 44:18-47:27

All WORSHIP SERVICES are held in person, livestreamed (emanuelsinai.org) and on Zoom (login in eNews)
TORAH STUDY meets in person and via Zoom.

MINYAN is held every Monday at 5:45 pm (except when the office is closed) only via Zoom and Livestream
Login information can be found in eNews.

CLERGY & STAFF CONTACT INFORMATION

Rabbi Valerie Cohen
rabbivaleriecohen@gmail.com

Talia Mugg, RS Director
tmugg@emanuelsinai.org

Jessica Lamothe, Administrative Assistant
jlamothe@emanuelsinai.org

Gitit Shoval, Cantorial Soloist & Music Director
gshoval@emanuelsinai.org

Sean Morgan, Temple Administrator
smorgan@emanuelsinai.org

Christa Benoit, Office Assistant
cbenoit@emanuelsinai.org

Temple Main Phone Line
508-755-1257

Steve Contois, Caretaker



RELIGIOUS SCHOOL AND YOUTH NEWS

Our school doors opened on Saturday, 9/17, with the voices of happy children and excited teachers! Our lobby was filled with families, incoming and returning. Our opening Tefilah that was led by our talented young song leaders Daniel Dworman and Marisa Cohen, was followed by "meet and greet" with teachers and parents and a school wide program that was led by our amazing Family Educator, Heather Gelardi.

This first day was a wonderful way to start another year. It was a bridging moment- bridging between the end of the summer break and the beginning of the new year, bridging between incoming and returning families, and a bridging of friendship making through eating apples and dipping them in sweet honey.

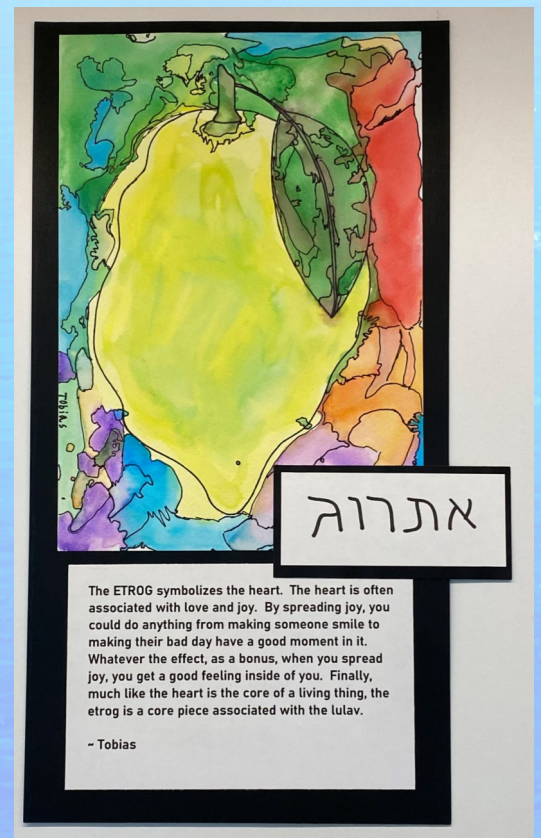
These past two months have been filled with a lot of learning: Judaic traditions, Mitzvot, Hebrew, Jewish Life cycles, Tikun Olam and more! We are looking forward to continuing our learning and growing together in the future months!

We are looking ahead to the holiday of Chanukah. Chanukah commemorates the rededication of the Temple in Jerusalem after it was defiled by the Syrian Greeks in the 2nd century BCE. Hanukkah celebrates liberation from oppression and reminds us of the importance of freedom of religion. It also teaches us to fight back when people's rights are taken away. Our students will be learning about these important values as well as the meaning of the holiday, the story, the blessings, and the mitzvot.

Please remember that our school follows the Worcester Public Schools snow cancellation policy. Make sure to check your email for weather related cancellations.

As always please don't hesitate to contact me with any questions.

L'Shalom,
Talía



CREATIVE CONTRIBUTIONS FROM OUR YOUTH

As Sukkot was fast approaching, and as grades 6 & 7 reviewed key components of this holiday, they took some time to focus on the FOUR SPECIES. Under the direction of TESRS's Art Specialist, Ellen Levitt, they have created beautiful watercolor paintings of the FOUR SPECIES, (אֶרְבֵּי עֵץ הַמִּינים) which are the ETROG, the LULAV, the MYRTLE, and the WILLOW.

In conjunction with the art portion of the project and under the guidance of class teacher Keren Azoulay, the students added a writing component. The students were asked to make a personal connection with the subject of their artwork. For example, the ETROG might symbolize the heart with which we feel for others and the LULAV might represent the spine with which we stand strong. The MYRTLE could refer to the eyes with which we see those who are overlooked, and the WILLOW might relate to the lips through which we speak out for others.

Once completed, the pieces were assembled and are now proudly displayed in the glass case in the foyer of the Temple. Be sure to take a look the next time you come by for the many upcoming occasions!

CHANUKAH AT TES

Multigenerational Chanukah Program - Sunday, December 18th

5:00pm – Dance party/fun activities for kids of all ages!

5:30pm – Food will be served and available in a separate room

6:15pm – Performance for adults & children, family friendly

Sign up to share Chanukah through Zoom from your home to ours

Except for Shabbat all times will be at 5:30pm

Monday, Dec 19
Thursday, Dec 22

Tuesday, Dec 20
Saturday, Dec 24

Wednesday, Dec 21
Sunday, Dec 25

Contact the office if you're interested! Email office@emanuelsinai.org or call us at 508-755-1257

Creative Latke Contest & Oneg - Friday, December 23rd 7pm

Shabbat Chanukah service immediately following at 7:30pm

If interested in entering and providing a submission as part of the oneg, please contact the office

We will also have an online version of the contest!

If interested, create your entrée and send a picture with a title and description to the office by 5pm on Wed, Dec 21st

Office contact information: Email – office@emanuelsinai.org Phone: 508-755-1257

Winners for both contests will be announced during the Shabbat Chanukah service

Temple Emanuel Sinai Welcomes Back

Save The Dates! **Sofer Neil Yerman**

November 9 - 12, 2022



Neil Yerman is a *sofer* (scribe) - a person who writes and restores Torah scrolls

- | | |
|---------------------------------|---|
| Wednesday
November 9 | <> Sofer Yerman will meet with TES Religious School students
<> Sofer Yerman will meet with Kehillah High students |
| Friday
November 11 | <> Sofer Yerman will deliver a D'var Torah, incorporating an expressive reading of Torah |
| Saturday
November 12 | <> Sofer Yerman will meet with TES Religious School students
<> Sofer Yerman will meet with any adults interested in learning more about our extraordinary scroll collection |

As many children and adults in the TES community have experienced in the past, Sofer Yerman is an excellent teacher and fascinating storyteller!

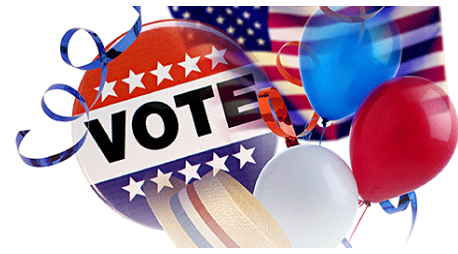
Neil is a sofer - a person who writes and restores Torah scrolls. In English, the Hebrew word sofer is translated as "scribe." To become a sofer, he had to master the art of Hebrew calligraphy, document restoration, and the many rules and traditions governing the writing and restoring of a Torah.

After a very thorough vetting process under the new rules of the Memorial Scrolls Trust, Sofer Yerman is now an authorized scribe permitted to work on Czech Republic Memorial Scrolls (what we refer to as a Holocaust Scroll).

Be sure to save the dates on your calendar and plan to be part of this wonderful experience!

VOTE VOTE VOTE - MAKE YOUR VOICE HEARD

Throughout history people have fought and even died for the right to vote. Our Jewish sages and scholars have spoken about the importance of having a voice in a vibrant democracy. When we choose officials to represent us, we entrust them to make decisions that will help maintain a healthy society and a government that functions in the best interests of the people.



Although Jewish organizations have been at the forefront of the fight to make voting accessible to everyone, many citizens still experience roadblocks in accessing their right to vote. Today the social action arm of the Reform Movement, the RAC (Religious Action Center), is combatting voter suppression through its nonpartisan Every Voice, Every Vote campaign.

In Massachusetts, we are fortunate to have a relatively friendly voting system. Even so, only about 22% of registered Massachusetts voters voted in the 2022 primary. If you don't vote, you are allowing just 1/5 of registered voters to make decisions for the remaining 4/5.

Having a voice in choosing your representative and senator impacts you, your family, and your neighbors in multiple ways. Here are some examples:

- How much money is allocated for education, policing, housing, and infrastructure, and how it is distributed.
- How local and state government address climate change and environmental issues
- Who is appointed to the state judiciary
- The tax rates
- How support services are allotted to the elderly and mentally ill
- Which issues and bills receive priority, including voting rights, a woman's right to choose, the penal codes, health care, undocumented immigrant status, and gun safety.

The Reform Movement now has a RAC in Massachusetts to focus on local issues. This year, the Massachusetts RAC is supporting ballot Question 4, which will allow the current driver's license law to remain in effect. The current law allows Massachusetts residents who are undocumented to obtain a learner's permit or driver's license. This type of driver's license cannot be used as a REAL ID for purposes of voting or travel.

Are you a registered voter in Massachusetts? If not, the deadline to register is October 29. Here are your options for casting your ballot in this year's midterm election:

1. Complete the "Vote by Mail" request form that was mailed to all registered voters. Send it to your local election office by 8pm on Tuesday November 1, 2022. If you didn't receive the form or have questions, go to www.VoteinMA.com for more information.
2. Vote early from October 22 to November 4. Information on the early voting sites can be found at www.sec.state.ma.us/ele/
3. Vote on election day November 8, 2022. To find your polling location, visit www.sec.state.ma.us/ele/
If you live in Worcester, go to www.worcesterma.gov/elections.

PLEASE VOTE AND ENCOURAGE YOUR FRIENDS AND NEIGHBORS TO VOTE!

SECURING FLOURISHING JEWISH TOMORROWS

One of the many lessons we can take from this very difficult year is that no one knows when they might become seriously ill or when their life might unexpectedly come to an end. Surely this is a good time for us each to examine our legacy, to ensure that our estate is distributed to our loved ones and to the institutions that are most important to us in a way that reflects our values and our priorities.

Temple's Life & Legacy Committee works to encourage pledges of future endowment gifts in estate plans. With several dozen Declarations of Intent (DOIs) already in hand, we want to thank those who have indicated that they will include the Temple in their end of life giving. We know that some others have not yet informed us of their similar intentions.

Our Shelanu Legacy Society is part of Life & Legacy, a program of the Harold Grinspoon Foundation coordinated locally by the Jewish Federation of Central Mass. Life & Legacy helps selected Jewish communities like ours, and the synagogues and agencies that serve them, to design and implement endowment campaigns to nurture a culture of planned giving and gratitude, guaranteeing a strong Jewish future.

To inquire about how you can participate or to let us know, anonymously if you choose, about a gift to our temple that is already part of your plan, you can contact us at shelanulegacy@emanuelsinai.org.



A Call for action in our community!

Help families living in the IHN (“In the Hour of Need”) *Family Shelter in Worcester
IHN accepts up to 6 families with children who do not qualify for state-funded shelters
Temple Emanuel Sinai has been supporting IHN since its inception, more than 20 years ago

Please contribute today! Every dollar makes an impact!

Our hosting period is 12/11/22 – 1/1/23. We are raising crucial funds for staffing, food, case management, and operational expenses. IHN relies on faith communities to remain operational.
To learn more about IHN, please visit ihnworchester.org



IHN, 91 June St.

This year we are also resuming volunteer support. This involves spending an evening (5:30 pm to 8:30 pm) and/or overnight (8:30 pm to 7:00 am) at IHN. If interested, email TESatIHN@gmail.com.

Questions: contact Mark Birnbaum at birnbaumm@merrimack.edu

Please contribute today! 100% of funds collected are donated to IHN.

- Make checks payable to *TES- IHN fund* and mail to TES
- Donate through the TES website; click on the Donations & Payments tab, and under Payment Details Type, select IHN Family Shelter

Donations may be made in honor of a person, special event, or in memory of a loved one.

THANK YOU FOR YOUR SUPPORT!

* IHN was formerly named “Interfaith Hospitality Network”

BUILDING COMMUNITY THROUGH ACTIVITY

The Worship and Lifelong Learning Committees are collaborating! We hope to identify activities that will enhance the Shabbat day (Saturday) and/or the end of Shabbat (Havdalah) while building community and relationships. Activities could be in person or online, adult-oriented or geared toward families, educational or experiential. The options are endless, but here are a few ideas to get you thinking:

Book discussion Yoga and/or meditation Jewish arts A nature walk A family movie and pizza

All it takes is initiative, someone to step forward with interest in organizing a one-time, or a monthly, or an ongoing activity. That person could be you! Members of the Worship and Lifelong Learning Committees are ready to assist you.

Please let us know what you are interested in, and we will help you figure out how to make it happen. We’re excited about the possibility and hope you are as well!

You can email us at worship@emanuelsinai.org or call the office during normal business hours at 508-755-1257.

TES DONATIONS: AUGUST 1, 2022 – SEPTEMBER 30, 2022

Audio Visual Technology Fund

Rabbi Valerie & Jonathan Cohen

Joseph Frem

Barcy Proctor in memory of Allyn J. Robbins

Lee & Chuck Radlo in memory of Minnie Radlo

Lee & Chuck Radlo in memory of Alexander McPhillips

Lee & Chuck Radlo in memory of Rose Horn

Debbie & Irwin Thomashow

Brotherhood Funds

Lee & Chuck Radlo in memory of Carl Radlo

Mara Yerow

Anne & Mac Levine Scholarship Fund

Joan & Rif Freedman in honor of their

65th wedding anniversary

Joan & Rif Freedman & Family in memory of Mac Levine

Joan & Rif Freedman in memory of Leo Freedman

Florence, Sidney & Jeffrey Medlinsky Fund

Barbara & Nevin Zablotsky in memory of Florence Medlinsky,

Sidney Medlinsky & Jeffrey Medlinsky

Lurier Scholarship Fund

Suzanne & Herbert Feldman in memory of Morris W. Feldman

Suzanne & Herbert Feldman in memory of Anna Shatsoff

Suzanne & Herbert Feldman in memory of Allyn J. Robbins

Richard Solomon Scholarship Fund

Toby & Howard Rome in memory of Elissa Pearl

Caring Committee Fund

Debbie & Irwin Thomashow in memory of Marilyn Goodwin

Endowment Fund

Frances Gordon in memory of Bernard Feingold

Frances Gordon in memory of Alexander Gordon

Frances Gordon in memory of Lillian Gordon

General Fund

Anonymous in memory of Ben Cohen

Joanne Bartosik in memory of Louis K. Moranz

Paula Bellin & Family in memory of Brenda and Ron Bellin

Paula Bellin & Andrew Freedman in honor of

Shirley Siff's Bat Mitzvah

Tobey & Louis Burwick in memory of Hyman Burwick

Harriette & Burton Chandler in memory of Samuel Chandler

Harriette & Burton Chandler in memory of Reba K. Levy

Harriette & Burton Chandler in memory of Sandra Berkowitz

Elaine Chase in memory of Milton Rosenwasser

Elaine Chase in memory of Dorothy Solomon

Cynthia & Dennis Cohen in memory of

Yitzchak and Tsiporah Druyan

Susan & John Connolly in memory of Michael Abrams

Melvin Cutler

Debbie & Steven Feingold in memory of David Levy

Lisa & Andrew Freilich in memory of Brenda Luzzo

Robert Frem in memory of Beatrice Frem

Carol & Edward Glick in honor of Shirley Siff's Bat Mitzvah

Frances Gordon in memory of Ronald Dorris

Ann Greenberg in memory of Ronald Greenberg

RoxAnn & Michael Gusar in memory of Rachel Gusar

RoxAnn & Michael Gusar in memory of George Gusar

Meg Hoey & Mark Birnbaum in memory of G. Brooke Hoey & Dorothy Brockhoff and in honor of the their son, Nathaniel's wedding

Meg Hoey & Mark Birnbaum in honor of their daughter,

Sara's wedding, in memory of Lore Birnbaum and Sonia Waxler

Karen Jacobson in memory of David Heiman

Karen & Mike Kagan in memory of Patricia Elliott

Lois Kahn in memory of Harry Bielfeld

Shirley Kane in memory of Benson Kane

Judy Lindberg in memory of Raymond Covitz &

Noah Joseph Lindberg

Lee & Chuck Radlo in memory of Abraham Birnbaum

Lee & Chuck Radlo in honor of the Adult B'nai Mitzvah Class

Susan S. Ritz in memory of Sunny Waxler

Elana Rosenbaum & David Levitin in memory of Goldie Rosenbaum

Yael Savage in honor of the Adult B'nai Mitzvah Class

Deb & Mark Shear in memory of Sunny Waxler

Barbara, Malcolm & Robin Sherman in honor of

Shirley Siff's Bat Mitzvah

Judith & Philip Shwachman

Shirley Siff in honor of Senator Harriette Chandler

Silver Family in memory of Sumner Silver

Jill & Michael Thaler in memory of Phyllis & Mel Farmelant

Phyllis Whitney in honor of Yael Savage chanting

the Haftorah on Rosh Hashanah

Talya Wolf

Marcia Wolfson & Family in memory of Cora Wolfson

Marcia Wolfson & Family in memory of Helen Paul

Marcia Wolfson & Family in memory of Morris Wolfson

High Holy Day Appeal

Nancy Berley & Scott Dworman

Lisa & Christopher Boehm

Doreen Brettler & James Hurowitz

Deborah & David Bunker

Kara & Jason Carpenter

Liza & John Carrigan

Alberta Chase

Elisabeth & Gerald Chase

Rabbi Valerie & Jonathan Cohen

Ronna & Jonah Cuker

Lori-Ann Cutler

Melvin Cutler

Brenda & Herbert Dean

Carole Dorris

Lauren Dunn

Lois & Bernard Edinberg

Deborah & Stephen Femia

Patti & Harvey Gould

Gary Gurwitz

Kizzy & David Handsman

Norma & Paul Handsman

Susan & Ronald Hayes

Jonathan Heimberg

David Heller

Michael Hirsh

Meg Hoey & Mark Birnbaum

Emily & James Holdstein

Patty & Donald Jacobs

Karen & Michael Kagan

Shelley & Gerald Kashuk

Susan & Glenn Kennis

Anne LaGrippe

Izzy & Ilana Lopez

Lauren Persky

TES DONATIONS CONTINUED

Alan Pullman
Lee & Chuck Radlo
Valerie & Ian Rifkin
Shelley & Todd Rodman
Elana Rosenbaum & David Levitin
Joyce Rosenfeld & Jill Debender
Patricia Roy
Sue & Richard Seder
Paula & Dennis Selvitella
Judy & Allan Shriber
Judith & Philip Shwachman
Shirley Siff
Lynne & Steven Silver
Phyllis & Richard Spool
Jonathan Steen
Michael Stern
Marcy Supovitz & Van Leichter
Karen & Tom Thomsen
Kristina Wilson & David Geist
Carla Royak-Volturo & Gregg Volturo
Glenda & Arthur Wolpert

Interfaith Hospitality Network (IHN) Fund

Lynne & Steven Silver

Lifelong Learning Fund

Patti & Harvey Gould in honor of the birth of James Kaufman, Jacob Felicetti's Bar Mitzvah, the Adult B'nai Mitzvah class and with gratitude to the TES Summer Institute speakers
Patti & Harvey Gould in memory of Ronald Dorris,
Sharonann Goldberg, Michael Amram & Sonia Waxler
Sharon Shapiro in honor of Shirley Siff's Bat Mitzvah

Ma'ot Chitim Fund

Ruth Berman & Family in memory of
Bessie Berman & Henry A. Berman

Marc Levine Youth Fund

Faye Levine in memory of Paula Silverman & Danny Baker
Faye Levine in memory of Sylvia Zellen, Israel Zellen & Everett Zellen
Faye Levine in memory of Marc David Levine

Music Fund

Emily & Michelle Gerber in memory of Arthur Arnold Gerber
Paula & Dennis Selvitella in honor of the birth of James Kaufman
Barbara & Joel Strogoff in memory of Aaron Stein

Rabbi's Fund

Margo Austein & Steve Miller in memory of Ann Austein and Paul M. Miller
Spenser Chicoine in appreciation
Helene & Lawrence Freed in memory of Sonia Waxler
Enid Garovoy in honor of Joan Sadowsky's birthday
Shelley & Gerry Kashuk in memory of Muriel Witkin
David Meyers in memory of Jeanette Meyers, Julius Meyers & Fannie Kravitz Smalley
David Meyers and Diane Meyers Doerfler in memory of Nathan Meyers
Aliza Miller & Jade Le'Jeune in honor of the naming of Danica Kelila (Dani Chana)
Barcy Proctor in memory of Bessie Proctor
Carla Royak-Volturo & Greg Volturo with gratitude for the wonderful naming of our granddaughters Sophia and Scarlett Volturo Wilson

Stuart Sadick in honor of Helene and Larry Freed's anniversary
Stuart Sadick in honor of the Adult B'nai Mitzvah Class
Regina & Bernard Schultz in memory of Ina Sirk
Judy & Allan Shriber in memory of Sonia Waxler
Judy & Allan Shriber in honor of the Adult B'nai Mitzvah Class
Judy & Allan Shriber in memory of Nettie Bowman

Religious School Fund

Lee & Chuck Radlo in honor of the naming of
Danica Miller Le'Jeune
Yael Savage
Judy & Allan Shriber in honor of the birth of James Kaufman

Robert Zinn Fund

Ann Merritt & Richard Fox in memory of Sunny Waxler
Pam Zinn & Mark Waxler in memory of Michael Amram and in honor of Ann Merritt & Richard Fox's anniversary

Shelanu Campaign Fund

Marlene & David Persky in memory of Joseph Persky
Marlene & David Persky in memory of Marguerite Persky
Marlene & David Persky in memory of Ron Dorris
Marlene & David Persky in memory of Sonia Waxler

Social Action Fund

Debra Lang in memory of Lila Lang
Yael Savage in memory of Ruth Hess

Torah Fund

Lee & Chuck Radlo in honor of the birth of James Kaufman
Jay Stiller in memory of Elaine Stiller

Wolpert Scholar in Residence Fund

Cynthia & Michael Wolpert in memory of Ina Sirk



Let's Connect!

Follow us online for the latest updates!



Like us on Facebook:
facebook.com/emanuelsinaiworchester

Follow us on Instagram:
[@templeemanuelsinai](https://www.instagram.com/templeemanuelsinai)



Watch our live streams:
<https://emanuelsinai.org/live-streams>

Read the latest blog:
<https://emanuelsinai.org/category/blog>



Levenson Smile

**Experience Exceptional Dental Care
In Worcester, MA**



Dr. Stanley Levenson DMD
(508) 731-3940
<https://www.levensonsmile.com/>
Office located at 9 Linden St Worcester, MA 01609
Membership plans and payment
options

TELEPHONE
508-485-6653
FAX
508-485-1311

JEFFREY D. LEVINE, M.D.

PRACTICE LIMITED TO THE EYE

372 CHANDLER STREET
WORCESTER, MASSACHUSETTS 01602

CENTRAL NEW ENGLAND'S
PREMIER FULL SERVICE
CATERING & TENT RENTAL
COMPANY



Since our beginning, our business has been *people* and their financial well-being. It's evident in good times, with decisions focused on the long term, and crucial when circumstances become difficult. That continued emphasis on people – our clients, communities, advisors and associates – gives us purpose, strength and a way forward. Today. And *always.*

FRED J SHUSTER
NEWBURY INVESTMENT PARTNERS
Registered Principal, RJFS
fred.shuster@raymondjames.com

22 Elm Street, Suite 330
Worcester, MA 01608
(508) 767-1013
newburyinvestmentpartners.com

RAYMOND JAMES

Securities offered through Raymond James Financial Services, Inc., member FINRA/SIPC. © 2020 Raymond James Financial Services, Inc., member FINRA/SIPC. Investment advisory services offered through Raymond James Financial Services Advisors, Inc.

PATRICK

You Do Better!

Patrick Volkswagen

519 Washington St. Auburn MA
508-832-8883

Patrick Mazda

70 Gold Star Blvd. Worcester MA
508-438-1675

Patrick Subaru

247 Boston Turnpike Shrewsbury, MA
508-756-8364

Volvo Cars Worcester

70 Gold Star Blvd. Worcester MA
508-438-1675



SUBARU



mazda



WWW.PATRICKMOTORS.COM

24-HOUR EMERGENCY SERVICE



PuroClean™
The Paramedics of Property Damage

Water • Fire • Mold • Biohazard
Damage Specialists

Immediate Response



Flooded Basement?

- Water Damage Restoration
- Mold Remediation
- Fire & Smoke Restoration
- Trauma Scene Remediation
- Biohazard Clean Up

774-321-3232

PuroClean Certified Restoration

www.PuroClean.com/pcrs-ma

Serving Blackstone Valley

We accept insurance assignments

Licensed and Fully Insured Independently Owned and Operated

WATER

FIRE

MOLD

BIOHAZARD

NORTH OXFORD MILLS

Carpet and Flooring

The best values in flooring since 1970

Robert Mack Commercial/Residential Markets

3 Clara Barton Road • North Oxford, MA 01537
P: 508-987-8521 • Cell: 508-887-6656 • Fax: 508-987-3413
rob@northoxfordmills.com • www.northoxfordmills.com



Carpet • Braided Rugs • Hardwood • Ceramic • Rubber • Vinyl • Tile • Linoleum



The
FEINGOLD Companies

Feingold Insurance Agency
Feingold Financial Management
Feingold Employee Benefit Services

Saul F. Feingold

Lisa M. Hirbour

David M. Dimenstein

Two Chestnut Place 508-831-9500
22 Elm Street 800-370-1718
Worcester, MA 01608-1727 FAX: 508-797-4030

On the Web at www.Feingoldco.com

College Resource Associates

Personal Guidance for Students and Families Preparing for College



Empowering Students for College Success



LET US HELP YOU

- * Identify 'best fit' colleges
- * Understand application and testing options
- * Prepare effective essays and resumes
- * Ace admission interviews
- * Manage performing arts requirements
- * Obtain and evaluate financial aid awards

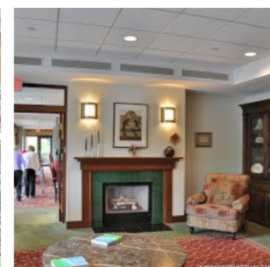
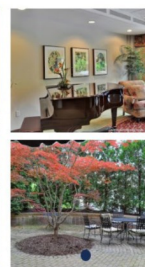
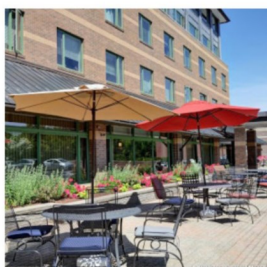
Apply with confidence to colleges that will be thrilled to have YOU as a student!

Contact us at (508) 757-8920 or
Joan@CollegeResourceAssoc.com

Assisted Living

the way it should be.

Spacious Apartments | Beautiful Courtyards | Comfortable Common Areas



- Kosher Dining
- Specialized Memory Care Unit
- Respite Care
- All Inclusive Pricing
- 24/7 Professional, Caring Staff
- Transportation to Appointments
- Social, Cultural & Educational Activities
- Housekeeping & Linen Services
- Onsite Shabbat and Religious Services
- Covid Response That is Diligently Safe & Creatively Fun

*Luxury, Convenience,
and Independence
for Seniors*



Eisenberg
Assisted Living
An Affiliate of Jewish
Healthcare Center

Open for Admissions

631 Salisbury St, Worcester, MA | (508) 713-0549
www.eisenbergal.com

OVER 30 YEARS EXPERIENCE

YOUNG'S



TREE SERVICE

***"SPECIALIZING IN
DANGEROUS TREES"***

Fully Insured • Free Estimates

**JOHN H. YOUNG, JR.
508-885-TREE
1-800-660-5358**



Mike Wolpert

www.wolpert.com

18 John Street Place
Worcester, MA 01609

(508) 459-4700



Now Serving
**The Greater Worcester
Jewish Community**



*The only locally-owned, full-service funeral home
providing traditional preparation on-site.*

TRADITIONAL AND
CONTEMPORARY SERVICES



Mercadante
**FUNERAL HOME
& CHAPEL**
Est. 1961

Worcester, MA • (800) 854-0486 • mercadante.com



Find Your Freedom

*Find premier retirement at
The Willows at Worcester*

At SALMON, we see independent senior living as just that: living, free from chores and maintenance. *We set the stage. You set the pace for your retirement reimagined.*

Call 508-755-0088 for pricing and availability details. The Willows at Worcester is waiting to welcome you!

SALMON
SENIOR LIVING

101 BARRY ROAD | WORCESTER, MA 01609



Mechanical Contractor

J. J. BAFARO, INC.

Plumbing • HVAC • Sheet Metal
Design • Installation • Service
Commercial • Industrial • Residential

SERVING MASSACHUSETTS
FOR OVER FOUR DECADES!

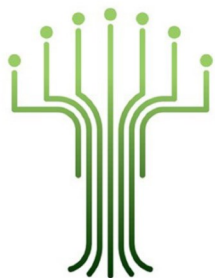


9-13 Winter St., P.O. Box 943, Worcester, MA 01613

WWW.JJBAFARO.COM

Phone: 508-757-7429 | Fax: 508-792-3922





Temple Emanuel Sinai
661 Salisbury Street
Worcester, MA 01609
www.emanuelsinai.org

Address Service Requested

Nonprofit
US Postage

PAID

Permit #1707
Worcester, MA

Richard Perlman*

Serving the Jewish communities of Worcester and Worcester County

Miles Funeral Directors of Holden

508.829.4434

Taharah (religious preparation) is performed on-site
by the Worcester Chevra Kadisha



Richard S. Mansfield
Funeral Director
www.milesfuneralhome.com

Contact Richard Perlman
Cell: 508.769.7017

*Lic - Type 6