



A NOTE FROM RABBI VALERIE

One of my favorite lines in our prayers comes from Yotzeir Or, the morning prayer about creation: "uv'tuvo m'chadeish b'chol yom tamid ma'aseh v'reishit – Your goodness renews Creation every day - always." For me, in Judaism and generally in life, the idea of "renewal" is meaningful. Although creation and the world around us is consistent in its existence, as evidenced by the word "tamid – always" in the phrase above, we need something new. We need to participate in the acts of renewal.

Starting on July 1st, we experienced our own renewal at Temple Emanuel Sinai as we welcomed Gitit Shoval, our new Cantorial Soloist and Music Director to our community. She brings with her a renewal: her own interpretation of our liturgy and music, along with a great respect and desire to learn our traditions. As I've mentioned before, Gitit is an incredibly talented musician and a truly compassionate human being. One of the reasons she joined our team was because she felt at home here, she liked us – the people she met. Gitit could choose to share her music anywhere and with anyone; we are blessed that she chooses to lead us.

I invite you to come to services in person during the summer to meet Gitit before the rush of the High Holy Days begin. Feel free to contact her at temple as well to introduce yourself and welcome her to TES. You can look forward to some special musical events and programs during the upcoming year led by Gitit, so watch all our publicity. She'll also be spending this year to learn more about who we are as she crafts her vision for our music and worship, so I expect to see even more inspirational, engaging, and fun experiences in the years to come.

Our Yotzeir Or prayer also includes these words of gratitude: "Mah rabu ma'asecha Adonai! Kulam b'chochma asita, mal'ah haaretz kinyanecha – How numerous are Your works, Adonai! With wisdom formed them all; filling the earth with Your creations."

With wisdom, the Eternal has brought renewal and creative energy to Temple Emanuel Sinai. For that, I am definitely grateful.





PRESIDENT'S MESSAGE

MUSINGS ON SUMMER

“Summer’s here and the time is right for dancing in the street”

This song, written by Marvin Gaye and a couple of other Mo-Town legends, and sung by Martha (Reeves) and the Vandellas, will forever be my landmark summer song. Although there are many songs written about summer, this song expresses exactly how I feel when summer comes. Excited, happy, ready to move! I feel free of the coldness that was in my veins.

I love summer. To paraphrase the American author Sam Keen, summer gives laziness respectability. Not laziness like lying around and doing nothing, but if you don’t feel like doing something, you can most likely get away with it. It’s either too hot, you are on vacation, or you just don’t feel like it. Summer will back you up.

My senses awaken in summer. I can smell all the flowers, the mowed grass. I hear tree frogs, crickets, birds chirping away. I see everything in lush, bright bloom, and touch the warm tomatoes as I pick them from the vines in the garden that my husband, Dennis, plants. The flowers on our blueberry bushes promise a good crop, and that new pear tree is coming along nicely. And it goes without saying that those tomatoes and blueberries will be tasted before they even reach the kitchen for a rinse!

Summer is, to me, God’s perfect season. We see God’s creation in its full array. Maybe the laziness I mentioned is really my reflection and observation of this. Although I love my home and yard, I want to get away to different places, to see that creation elsewhere. Summer moves me in all the ways that a person can be moved. I seem to feel my spirituality more in summer. A hot day is like arms around me giving me a hug. God’s hug, I think.

I hope all of you enjoy your summer. Take it all in...even those hot and sultry days. And as always, I look forward to seeing many of you at services, Mahjong, and any other gathering that may be held. And if I don’t, I hope that you will be reflecting and observing God’s creation at the beach, camping, hiking, and just enjoying everything!

L’Shalom,
Paula Selvitella, President

WALK FOR THE HOMELESS

Here are members of our TES team leading off the Walk for the Homeless, recognized for being the top fundraising team.



JULY - AUGUST 2022 WORSHIP SERVICES

KORACH

Friday, July 1st
Candle Lighting at 8:10pm
7:30pm Shabbat Service
Saturday, July 2nd
10:30am Torah Study
NUMBERS 16:1-18:32

CHUKAT

Friday, July 8th
Candle Lighting at 8:08pm
EARLY 6:30pm Shabbat Service
Saturday, July 9th
10:30am Torah Study
NUMBERS 19:1-22:1

BALAK

Friday, July 15th
Candle Lighting at 8:04pm
7:30pm Shabbat Service
Saturday, July 16th
10:30am Torah Study
NUMBERS 22:2-25:9

PINCHAS

Friday, July 22nd
Candle Lighting at 7:59pm
7:30pm Shabbat Service
Saturday, July 23rd
10:30am Torah Study
NUMBERS 25:10-30:1

MATOT - MASEI

Friday, July 29th
Candle Lighting at 7:52pm
7:30pm Shabbat Service
Saturday, July 30th
10:30am Torah Study
NUMBERS 30:2-36:13

DEVARIM

Friday, August 5th
Candle Lighting at 7:44pm
7:30pm Shabbat Service
Saturday, August 6th
10:30am Torah Study
DEUTERONOMY 1:1-3:22

VAETCHANAN

Friday, August 12th
Candle Lighting at 7:35pm
EARLY 6:30pm Shabbat Service
Saturday, August 13th
10:30am Torah Study
DEUTERONOMY 3:23-7:11

EIKEV

Friday, August 19th
Candle Lighting at 7:24pm
7:30pm Shabbat Service
Saturday, August 20th
10:30am Torah Study
DEUTERONOMY 7:12-11:25

RE'EH

Friday, August 26th
Candle Lighting at 7:13pm
7:30pm Shabbat Service
Saturday, August 27th
EARLY 9:00AM Torah Study
DEUTERONOMY 11:26-16:17



All WORSHIP SERVICES are held in person, livestreamed (emanuelsinai.org) and on Zoom (login in eNews)

TORAH STUDY meets in person and via Zoom.

MINYAN is held every Monday at 5:45 pm (except when the office is closed) only via Zoom and Livestream
Login information can be found in eNews.

CLERGY & STAFF CONTACT INFORMATION

Rabbi Valerie Cohen
rabbivaleriecohen@gmail.com

Talia Mugg, RS Director
tmugg@emanuelsinai.org

Jessica Lamothe, Administrative Assistant
jlamothe@emanuelsinai.org

Gitit Shoal, Cantorial Soloist & Music Director
gshoval@emanuelsinai.org

Sean Morgan, Temple Administrator
smorgan@emanuelsinai.org

Christa Benoit, Office Assistant
cbenoit@emanuelsinai.org

Steve Contois, Caretaker



MUSIC NEWS

Hello to my new home and family, Temple Emanuel Sinai!

My name is Gitit Shoval, I am a mother of four, a wife, a singer, a musician, and a songwriter. I was born and raised in Israel and relocated to North America with my husband and children in 2003. My music career began when I was 14 years old, when I took part in the Pre-Eurovision contest, back in the days when Israel only had a single channel on television. Since that moment, I have been writing, acting, and performing all over the world. My husband Ron and I owned a voiceover studio and produced the Hebrew versions of many beloved cartoon series. I was the Hebrew voice of characters such as Smurfette (The Smurfs), Barbie, and many more.

When I began leading services, I felt something changing in me while being on the bimah, singing all these meaningful prayers. I suddenly felt connected to my own spirit and soul, and to my surroundings. I immediately fell in love with praying through music and with feeling so present, and this changed my life as if I finally found my right place in the world. I cannot express just how excited I am to start my new journey at Temple Emanuel Sinai, and to be working alongside Rabbi Valerie. I am looking forward to getting to know you, and for you to get to know me. I am excited to hear your stories, and to share mine with you.

Last week I graduated Berklee College of Music with a master's degree in "The Art of Songwriting". Some of the songs I have written during my studies are connected to Judaism, and I cannot wait to share them with you. The High Holidays are around the corner and Rabbi Valerie, the quartet, and I, are starting our rehearsals soon. We hope to create a moment of connection, a moment of growth, and an uplifting spiritual experience, strengthening and empowering us all. I'm looking forward to meeting all of you.

Sincerely,
Gitit

A CONVERSATION WITH *Harriette Chandler*



SAVE THE DATE

September 10th, 2022

Sit down with Senator Harriette Chandler as she joins TES for a conversation about her historic career and lifetime pursuit of justice.

Details to follow!



TZEDEK, TZEDEK, TIRDOF! *Justice, Justice, you shall pursue!* (Deut. 16:20)



RELIGIOUS SCHOOL AND YOUTH NEWS

Shalom From the Religious School!

This past year was an incredible year! Whether in Hebrew, Torah or Jewish values, our innovative and dedicated teachers offered our students the finest Jewish education.

These are the teachers and class assignment for the 2022-2023 school year:

Sarah Noble Young - Grades K-1

Marissa Levitt - Grade 2

TBD - Grade 3

Emma Noce - Grades 4/5

Keren Azoulay - Grades 6/7

Ellen Levitt - Learning Center and Arts Specialist

Gitit Shoal - T'filah/Music Director & Songleader Mentor; Pray and Play Ktantan* Leader"

Daniel Dworman and Marisa Cohen - Junior Songleaders

Heather Gelardi - Family Educator

Ellen Levitt will be moving into a new role as the Learning Center and Art Specialist. You will be getting a welcome email from your child's teacher in August.

This past year we had so many exciting programs:

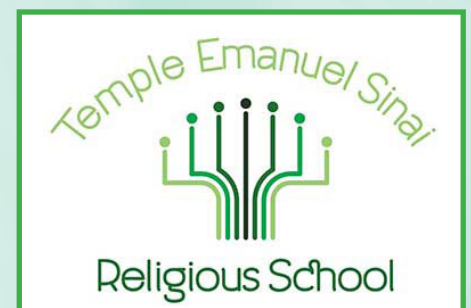
- Students' education programs with Heather Gelardi, our family educator
- Friday night services led by our students
- Hanukkah school wide celebration led by our Madrichim
- Tu B'Shevat Seder led by Margot Barnet and Yael Savage
- Purim talent show and carnival led by our Madrichim
- Maot Chitim Baskets made by our grade 7 students
- Shabbat morning Torah teaching led by Rabbi Valerie
- Special Shabbat morning services led by various visiting musicians

We are looking forward to another exciting year at our Religious School! Please save the date for first day of school on **Saturday, September 17** at Temple Emanuel Sinai. Religious School registration and calendar will be available soon. If you are looking for financial aid, please email Sean Morgan at smorgan@emanuelsinai.org

Wishing everyone a fun and safe summer!

Talia

**ktantan means "little ones"*



SOCIAL ACTION/SOCIAL JUSTICE NEWS

TES religious school and the Social Action Committee conducted a used sneaker drive on the last day of religious school. Students brought used sneakers that would normally be thrown in the trash, and the sneakers will be sent to an organization named GotSneakers. This organization sells sneakers that are in good shape at a reduced price and repurposes ones that cannot be sold. But none go into landfills. The organization will also send a small check to TES and the money will be given to the religious school.

If you have sneakers that you are no longer using, don't throw them away.

Email Yael Savage at: jenniesavage@charter.net and she will be happy to pick them up and send them to GotSneakers. Saving the environment one sneaker at a time.



TES Members gathered on June 8, 2022, at the Worcester Art Museum (WAM) to view the exhibit **Us | Them | We, Race X Ethnicity X Identity**. The group tour was cosponsored by Lifelong Learning and Walls to Bridges. Shelley Rodman, TES member and a docent at WAM, guided the group through the two galleries of work by BIPOC artists. The paintings, prints, photographs, collages, and sculpture demonstrated ways that contemporary artists are reflecting on issues around identity and racism. Many pieces in the exhibit prompted difficult consideration of inclusion and power; others were more joyful. Several of the works featured are recent acquisitions to the Worcester Art Museum collection on display for the first time. We enjoyed visiting the exhibit together and thinking about initiatives within TES to build an inclusive, welcoming community.

B'NAI MITZVAH



Jacob Paul Felicetti

Son of Dana and Jessica Felicetti

Bar Mitzvah August 27, 2022

Jake is an avid sports enthusiast who loves playing baseball, basketball, and snowboarding at Mt. Wachusett. He also enjoys drawing and hanging out with friends. He is looking forward to celebrating becoming a Bar Mitzvah with his family and friends.

LIFELONG LEARNING

TES Summer Institute 2022 is coming your way!

Join us at Friday night services to learn more about the vast range of Tikkun Olam (repairing the world) efforts in our community. We will host speakers from our own congregation, as well as guests from the Greater Worcester area who work with important non-profit organizations that help bring resources and support to the underserved populations amongst us.

Check out the schedule for this year's 4th Annual TES Summer Institute and mark your calendars!

July 8 (early service)

RAW (Refugee Artisans of Worcester) with Joan Kariko, Co-founder

July 15

The Jane Fund with Marcy Ostrow and Laurie Porter, Jane Fund Board Members

July 22

Genesis Club of Worcester with Lisa Brennan, Director, and Luke Knowles, Club Member

July 29

Ansaar of Worcester with Mona Ives, President and Educator

August 5

Southeast Asia Coalition with Anh Vu Sawyer, Director

August 12 (early service)

CASA (Court Appointed Special Advocates) with Shelley Rodman, Advocate Volunteer

August 19

YOU, Inc. Worcester Family Resource Center with Debbie Bunker, LICSW

Securing Flourishing Jewish Tomorrows

One of the many lessons we can take from this very difficult past couple of years is that no one knows when they might become seriously ill or when their life might unexpectedly come to an end. Surely this is a good time for us each to examine our legacy, to ensure that our estate is distributed to our loved ones and to the institutions that are most important to us in a way that reflects our values and priorities.

Temple's Life & Legacy Committee works to encourage pledges of future endowment gifts in estate plans. With several dozen Declarations of Intent (DOIs) already in hand, we want to thank those who have indicated that they will include the Temple in their end of life giving. We know that some others have not yet informed us of their similar intentions.

Our Shelanu Legacy Society is part of Life & Legacy, a program of the Harold Grinspoon Foundation coordinated locally by the Jewish Federation of Central Mass. Life & Legacy helps selected Jewish communities like ours, and the synagogues and agencies that serve them, to design and implement endowment campaigns to nurture a culture of planned giving and gratitude, guaranteeing a strong Jewish future.

To inquire about how you can participate or to let us know, anonymously if you choose, about a gift to our Temple that is already part of your plan, you can contact us at shelanulegacy@emanuelsinai.org.

High Holy Day Schedule 5782

ALL SERVICES WILL BE IN PERSON AND ONLINE

Selichot Service: Saturday, September 17, 7:30 pm

ROSH HASHANA

Erev Rosh Hashana: Sunday, September 25, 7:30 pm

Rosh Hashana Family Service: Monday, September 26, 9:00 am
(for families with children 4th grade and younger)

Rosh Hashana Main Service: Monday, September 26, 11:00 am

Rosh Hashana 2nd Day Service: Tuesday, September 27, 11:00 am

Tashlich: Tuesday, September 27, immediately following services, at TES pond
(meet in front of building)

Shabbat Shuva: Friday, September 30, 7:30 pm

YOM KIPPUR

Kol Nidre: Tuesday, October 4, 7:30 pm

Yom Kippur Day: Wednesday, October 5

Yom Kippur Family Service: 9:00 am
(for families with children 4th grade and younger)

Yom Kippur Main Service: 11:00 am

Healing Service: immediately following Main Service (estimated 1:00 pm)

Study Sessions: topics TBA, 2:00 pm

Afternoon Service: 3:30 pm

Yizkor/Memorial Service: 5:00 pm

Ne'ilah/Concluding Service: 6:00 pm

SUKKOT

Erev Sukkot Service: Sunday, October 9, 6:30 pm

SIMCHAT TORAH

Erev Simchat Torah Service: Sunday, October 16, 6:30 pm

Festival Morning Service and Yizkor: Monday, October 17, 10:30 am

Tisha B'Av Service: Saturday, August 6, 7:30 pm

A Meditative and Musical Service: From Brokenness to Healing
Outside on Back Patio

Tisha B'Av-The ninth day of the month of Av- Remembering the destruction of the Temple in Jerusalem.

Tisha B'Av is a holy day that does more than commemorate the destruction of the Temple and persecution of our history; it is a reminder that although the world has been broken, we can and will emerge whole. Although we grieve, together we can heal and find meaning for the future.

Emerging from a broken world - this is the message of the past and the present.
Finding meaning out of loss - this is a message of the future.

Join us on the TES back patio for a meditative and musical service surrounded by nature. With liturgy and the whispers of our own hearts, we will wind our way through our past and through our brokenness toward wholeness and healing.

Looking Ahead to September...

(More information in upcoming eNews and next bulletin)

- **A Conversation with Harriette Chandler**, September 10 (see p. 4 for more information)

- **Adult B'nai Mitzvah Service**, Friday, September 16, 7:30 pm

Celebrate with our six students as they lead a creative service, read from the Torah, and share their understanding of the Torah Portion and why they decided to embrace this ritual at this particular time in their lives. This service is a culmination of multiple years of work; even though the service was postponed because of Covid, we kept studying throughout. Mazel Tov to our B'nai Mitzvah Students: Karen Kagan, Dan Margolis, Heather Posner, Elana Rosenbaum, Shirley Siff, and Karen Thomsen

- **First Day of Religious School (K-7th)**

Saturday, September 17, starting at 9:00am at Temple Emanuel Sinai
(most sessions will take place at the JCC)

- **First Day of Pray and Play (for families with children 0-5, pre-Kindergarten),**

Saturday, September 24, starting at 9:00am at the JCC

- **Selichot Service and Program**, September 17, 7:30 pm

"Welcome" Service and Celebration of Gitit Shoval Renewing our Music at TES Friday, August 26, 7:30 pm



Join us on Erev Shabbat, Friday, August 26 as we formally welcome Gitit Shoval as our new Cantorial Soloist and Music Director. She will lead us through a beautiful and meaningful musical service along with her daughter Tutti Druyan and husband Ron Druyan. Gitit will also share her musical vision and her hope for Temple Emanuel Sinai's musical future. This service will be a wonderful introduction to Gitit and the last Shabbat before we enter the month of Elul, the month of preparation for the High Holy Days.

PRAY AND PLAY RETURNS

Starting - Saturday, September 24

Pray and Play with Temple Emanuel Sinai

Saturday (Shabbat) mornings when Religious School is in Session at the JCC 9:00-10:45 am
For families with children 0-5, pre-Kindergarten

9:00 am "Pray"

Fun and Musical T'filah (Service) with TES Religious School, led by Songleaders.

9:45 am "Play"

Storytime, games, activities, more music, and lots more fun for our little ones and their families.

Led by Gitit Shoval, TES Cantorial Soloist and Music Director.

Gitit has many years experience engaging with children of all ages and teaching music and Hebrew. She also has voiced countless iconic cartoon characters such as the Hebrew voice of the legendary Smurfette of The Smurfs, the Hebrew voice of Barbie from Mattel, as well as countless other characters in Bob the Builder, Dragon Tales, and many more!



TES DONATIONS: APRIL 1, 2022 – MAY 31, 2022

Audio Visual Technology Fund

Deborah & David Bunker
Dr. Margot Barnet & David Coyne
Rabbi Valerie & Jonathan Cohen
Merilee & Alan Freeman
Joseph Frem
Meg Hoey & Mark Birnbaum
Debbie & Martin Jackson
Adam Laipson
Daniel Mutlu in honor of Sam Mutlu
Lee & Chuck Radlo
Rifkin Family
Paula & Dennis Selvitella
Paula & Dennis Selvitella in memory of Madeline Demers
Deb & Mark Shear
Shirley Siff, Karen Siff Exkorn & Franklin Exkorn, and Larry & Joan Siff in memory of Robert M. Siff
Karen & Tom Thomsen
Stacey Weisberg & Mark Underkofler

Brotherhood Scholarship Funds

Lurier Scholarship Fund

Suzanne & Herbert Feldman in memory of Charles Freedman
Suzanne & Herbert Feldman in memory of Dorothy Robbins
Suzanne & Herbert Feldman in memory of Bertha Feldman
Dorothy Lurier in memory of Miriam Lurier
Lurier & Gordon Family in memory of Ida Feingold

Camp Scholarship Fund

Lee & Chuck Radlo in memory of Jack Warren Daniels

Caring Committee Fund

Lori-Ann Cutler in memory of Ernest F. Jost, Sr.
Lee & Chuck Radlo in memory of Janet Arsenault

Endowment Fund

Frances Gordon in memory of Lenore Feingold Richter

General Fund

Mark Aaronson in memory of Richard P. Aaronson
Ivy & Ed Beaudreau in memory of Jason Beaudreau
Ruth Berman & Family in memory of Bernard Katz & Tillie Katz
Ruth Berman & Family in memory of Ruth Chafetz
Harriette & Burton Chandler in memory of Eunice Chandler
Cynthia & Dennis Cohen with gratitude to Monica & Gary Wolf
Cynthia & Dennis Cohen in memory of Else Moses Resnick
Cynthia & Dennis Cohen in memory of Mina Drougen
Susan & John Connolly in memory of Milton Michaelson
Elisabeth Cotton in memory of Aimee Rubin Polk
Carol & Steven Friedman in memory of Evelyne Y. Wolfe
Paula Freeman & Jeremy Soybel in memory of Amanda Soybel Savage
Miriam Gallant in memory of Morton E. Kanter
Carol & Edward Glick in memory of Norman Glick

Bernard Greece in memory of Judith L. Greece
Michael Gusar in memory of Robert Gusar
Jaffe, Yaffe & Feingold, P.C. in memory of Robert Isenberg
Ronald Joseph in memory of Edna Joseph
Barton Kamp in memory of Leon Kamp
Susan Marder in memory of Lillian K. Sacks
Neil Patrick & Family in memory of Miriam Patrick
Barcy Proctor in memory of Cecile R. Proctor

Lee & Chuck Radlo in memory of Louis Radlo
Lee & Chuck Radlo in memory of John Mervyn Lent
Barbara & Arnold Ravelson in memory of Mark Epstein's sister, Diane
Barbara & Arnold Ravelson in memory of Ruth Ravelson
Claudia & Lester Ross in memory of Helen Ross
Anne & Jonathan Sadick in memory of Nancy Sadick
David Sadick in memory of Nancy Sadick
Silver Family in memory of Alexander Silver
Lynne & Steven Silver in memory of Sara Silver
Janet Solomon in memory of Barney Solomon, Seymour Solomon, Beatrice Solomon & Irving Schultz
Garie & Howie Stein & Family in memory of Ethel & Archie Morganstern
Stillman Family
Sheila Tarlin in memory of Harris Tarlin
David Weiss in memory of Constance Weiss
White Family in memory of Theodore White
Hazel Wightman
Wolfson Family in memory of Jack L. Wolfson
Mara Yerow in memory of Gertrude Yerow
Brian Zobot in memory of Freda Hirshberg Zobot Kaplan

High Holy Day Appeal

Debbie & Steven Feingold
Jill & Michael Finkle
Joan & Kim Kaplan
Ellen & Richard Levitt
Talia & Andy Mugg
Sharon & David Seifer
Stephen Slaten
Lindsay & Saul Wilk
Monica & Gary Wolf
Pamela Zinn & Mark Waxler

Interfaith Hospitality Network Fund

Lori-Ann Cutler in memory of Ernest F. Jost, Sr.
Patti & Harvey Gould in honor of the Walk for the Homeless

Lifelong Learning Fund

Lori-Ann Cutler in memory of Ernest F. Jost, Sr.

DONATIONS CONTINUED

Ma'ot Chitim Fund

Wahle Family in memory of Rita Toni (Brandstein) Wahle

Marc Levine Youth Fund

Faye Levine in memory of Libby Ruskin

Music Fund

Lori-Ann Cutler in memory of Paula Jost Strickland

Martha Grace in memory of Lillian Hurowitz

Hazel Wightman

Prayerbook Fund

Roberta Sufirin in memory of Bertha Budish

President's Fund

Lori-Ann Cutler in memory of Ernest F. Jost, Sr.

Rabbi's Fund

Nancy Benjamin in honor of Olivia Mack's graduation

Nancy Benjamin in honor of Sam Mack's graduation

Trudy & Merrill Cohen in memory of Thomas Cohen

Lori-Ann Cutler in memory of Ernest F. Jost, Sr.

Helene & Lawrence Freed in memory of Ruth Kaufman Perler

Susie & Dickie Gotz in honor of Mr. & Mrs. Richard Seder's grandchildren's graduation and grandson's Bar Mitzvah

Susie & Dickie Gotz in honor of Mr. & Mrs. Bernard Edinberg's granddaughter's graduation

Susie & Dickie Gotz in honor of Nancy Benjamin' grandchildren's graduation and Mr. & Mrs. Norman Sirk' grandson's Bar Mitzvah

Steve M. Miller in memory of Marilyn Miller

Barcy Proctor in memory of Samuel Proctor

Lee & Chuck Radlo in memory of Karen Trainor

Edward Stein in memory of Pearl Stein

Shelanu Campaign Fund

Stuart Glass in memory of Lillian Glass

Debbie & Irwin Thomashow in memory of George Thomashow

Social Action Fund

Sandra Meltzer in memory of Louis Meltzer

Yael Savage in memory of Eric Hess

Tillie Savat Music Fund

Barcy Proctor in memory of Nancy Savat Melnick

Torah Fund

Mike Kagan in memory of Everett Kagan

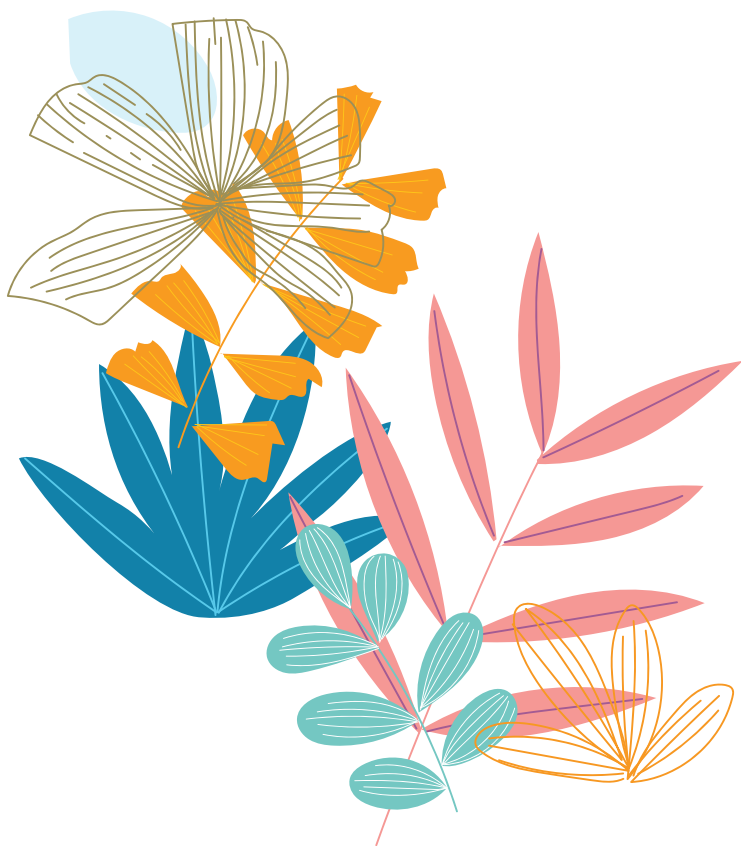
Lee & Chuck Radlo in honor of Rudy Martinez-Rivera

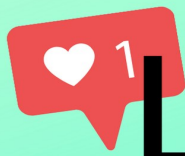
Sandy Sotak in memory of Chris Sotak

Walls to Bridges Fund

Cynthia & Evan Graber in memory of
Sidney Graber & Albert Volinsky

Karen & Tom Thomsen in memory of Charles Tischelman





Let's Connect!

Follow us online for the latest updates!



Like us on Facebook:
facebook.com/emanuelsinaiworchester

Follow us on Instagram:
[@templeemanuelsinai](https://instagram.com/templeemanuelsinai)



Watch our live streams:
<https://emanuelsinai.org/live-streams>

Read the latest blog:
<https://emanuelsinai.org/category/blog>



TELEPHONE
508-485-6653
FAX
508-485-1311

JEFFREY D. LEVINE, M.D.

PRACTICE LIMITED TO THE EYE

372 CHANDLER STREET
WORCESTER, MASSACHUSETTS 01602

Since our beginning, our business has been *people* and their financial well-being. It's evident in good times, with decisions focused on the long term, and crucial when circumstances become difficult. That continued emphasis on people – our clients, communities, advisors and associates – gives us purpose, strength and a way forward. Today. And *always.*

FRED J SHUSTER
NEWBURY INVESTMENT PARTNERS
Registered Principal, RJFS
fred.shuster@raymondjames.com

22 Elm Street, Suite 330
Worcester, MA 01608
(508) 767-1013
newburyinvestmentpartners.com

RAYMOND JAMES

Securities offered through Raymond James Financial Services, Inc., member FINRA/SIPC. © 2020 Raymond James Financial Services, Inc., member FINRA/SIPC. Investment advisory services offered through Raymond James Financial Services Advisors, Inc.

OVER 30 YEARS EXPERIENCE

YOUNG'S



TREE SERVICE

***"SPECIALIZING IN
DANGEROUS TREES"***

Fully Insured • Free Estimates

**JOHN H. YOUNG, JR.
508-885-TREE
1-800-660-5358**



Mike Wolpert

www.wolpert.com

18 John Street Place
Worcester, MA 01609

(508) 459-4700

**LAW OFFICE OF
David T. Bunker, Esquire**



**17 TATTAN FARM ROAD
WORCESTER, MA 01605
508-864-3584
dbunker0453@charter.net**

GENERAL PRACTICE

**Specializing in:
Business Law**

**Condominium Law
Estate Planning**

NORTH OXFORD MILLS Carpet and Flooring

The best values in flooring since 1970

Robert Mack Commercial/Residential Markets

3 Clara Barton Road • North Oxford, MA 01537
P: 508-987-8521 • Cell: 508-887-6656 • Fax: 508-987-3413
rob@northoxfordmills.com • www.northoxfordmills.com



Carpet • Braided Rugs • Hardwood • Ceramic • Rubber • Vinyl • Tile • Linoleum



The
FEINGOLD Companies

Feingold Insurance Agency
Feingold Financial Management
Feingold Employee Benefit Services

Saul F. Feingold

Lisa M. Hirbour

David M. Dimenstein

Two Chestnut Place 508-831-9500
22 Elm Street 800-370-1718
Worcester, MA 01608-1727 FAX: 508-797-4030

On the Web at www.Feingoldco.com

College Resource Associates

Personal Guidance for Students and Families Preparing for College



Empowering Students for College Success



LET US HELP YOU

- * Identify 'best fit' colleges
- * Understand application and testing options
- * Prepare effective essays and resumes
- * Ace admission interviews
- * Manage performing arts requirements
- * Obtain and evaluate financial aid awards

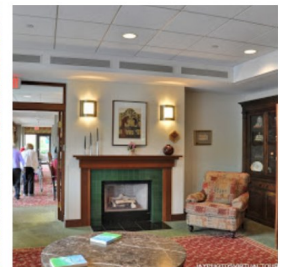
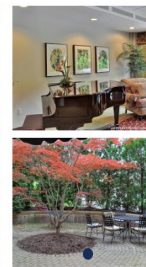
Apply with confidence to colleges that will be thrilled to have YOU as a student!

Contact us at (508) 757-8920 or
Joan@CollegeResourceAssoc.com

Assisted Living

the way it should be.

Spacious Apartments | Beautiful Courtyards | Comfortable Common Areas



- Kosher Dining
- Specialized Memory Care Unit
- Respite Care
- All Inclusive Pricing
- 24/7 Professional, Caring Staff
- Transportation to Appointments
- Social, Cultural & Educational Activities
- Housekeeping & Linen Services
- Onsite Shabbat and Religious Services
- Covid Response That is Diligently Safe & Creatively Fun

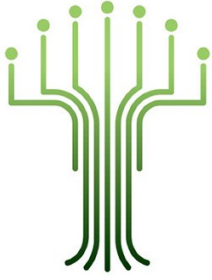
*Luxury, Convenience,
and Independence
for Seniors*



**Eisenberg
Assisted Living**
An Affiliate of Jewish
Healthcare Center

Open for Admissions

631 Salisbury St, Worcester, MA | (508) 713-0549
www.eisenbergal.com



Temple Emanuel Sinai
661 Salisbury Street
Worcester, MA 01609
www.emanuelsinai.org

Address Service Requested

Nonprofit
US Postage
PAID
Permit #1707
Worcester, MA

Richard Perlman*

Serving the Jewish communities of Worcester and Worcester County

Miles Funeral Directors of Holden

508.829.4434

Taharah (religious preparation) is performed on-site
by the Worcester Chevra Kadisha



Richard S. Mansfield
Funeral Director
www.milesfuneralhome.com

Contact Richard Perlman
Cell: 508.769.7017

*Lic - Type 6