

A NOTE FROM RABBI VALERIE



I feel like I have written many bulletins and eNews articles about music and worship this year, which is not surprising. In addition to worship being integral to Judaism and music being integral to worship, this year has been an amazing exploration of different musical styles for our congregation. We started the year with our Argentinian Cantor, Jonathan Kohan, as Cantor-in-Residence for three months and over the High Holidays. Following Cantor Jonathan, we hosted a variety of cantors, soloists, and song leaders who led us in prayerful music on Shabbat; we are amid our Visiting Musician Series with six nationally recognized Jewish musicians; and we've even had the opportunity to host a few unexpected or "bonus" musical guests.

What a blessing this year has been for our congregation! "Music washes away from the soul the dust of everyday life." (Berthold Auerbach) We have been inspired, lifted in joy, comforted in our sorrow, and brought closer to God through the diversity of music that has come forth from our sanctuary into our homes and into our souls. Our music has been anything but "everyday".

Of course, not all of us have been inspired by all of this year's music all of the time. In fact, I feel confident that at least once you said "eh" in response to a song or prayer, or mentally winced, or thought about how much you disliked such-and-such tune. I'm confident because I had that experience at least once... or maybe more. It would be impossible for all of us to love all of the music all of the time because music is a matter of taste, experience, history, memory, and an unidentifiable feeling that blooms in our souls – or not.

Herein lies the mitzvah of Jewish Community: not just celebrating our diversity but valuing it even when that means participating in things we don't enjoy. Imagine sitting in the sanctuary and hearing a particular melody, maybe the grand R'tzei that we sing on High Holidays and some Friday nights. Your heart might soar along with the cantor's voice, yet the person sitting behind you might be thinking, "ugh, not this again." Even though the person behind you doesn't connect with the music, they can appreciate it because they know that other people in the congregation do. The connection isn't to the music, but rather to each other. And just 5 minutes later, you hear that same person singing soulfully to a version of Mi Shebeirach that you've never heard before and think belongs at a camp or a concert. Even if that version makes you wince and you're longing for Debbie Friedman, you can be sure that the music is comforting people who need healing.

The next time you attend Shabbat Services, for both online and in person experiences, I challenge you to sing fully to a tune you don't like, as you're singing on behalf of the community. The entire service may not be filled with music you love, but most likely there will be at least one musical moment if not more that opens palaces in your soul.

PRESIDENT'S MESSAGE



COME FORTH!

Two years of caution, shut-down, disguise,
It may be time to wake-up.
Emerge, make contact, be public, relate,
See, be seen, and show up!
Begin with a place you love to go -
A treat, a pleasure, some fun.
Meet up with friends, people you love,
A cafe, a film, conversation.

It's time to begin a new normal,
Not languish, but flourish instead!
Start to be social, together again,
Planning, hoping, looking ahead.

I'd LOVE to see faces in person!
To have more chairs in our space.
Let's leave behind Zoom for the summer,
Come together and interface.



"You don't need to feel good to get going, you need to get going to feel good!"
(Lindsey Crouse, New York Times)

By now you get my drift...I'm looking forward to TOGETHERNESS this summer! Be well, everyone,
and I'll see you at TES.

L'Shalom,
Paula Selvitella, President

SECURITY UPDATE

BY POPULAR DEMAND!

Many of us have been attending Security briefings on-line or at the JCC regarding security and how we can be safe if we are threatened. If you are one of the folks wondering about TES's plans for securing our worship space, you will want to attend the Security Training session that will take place here at TES on Wednesday, May 25, at 6:30 P.M.

This is a Jewish Federation collaboration of the entire Jewish Community. It will be led by the Worcester Police Department who have been working closely with Steve Schimmel and Mark Shear in planning this training. It will be in-person, and COVID guidelines will be followed.

This is vital knowledge being provided to us for free, and it would be wonderful for us all to take advantage of this. Learn where the "Safe Rooms" are in the building, the fire extinguishers, the First Aid kits, and other handy little tricks for locking a door, creating diversion, and just being safe in general. More information on registering for this program will follow in the E-News as the month progresses.

MAY - JUNE 2022 WORSHIP SERVICES

KEDOSHIM – GUEST MUSICIAN NAOMI LESS

Friday, May 6th
Candle Lighting at 7:35pm
7:30pm Shabbat Service
Saturday, May 7th
10:30am Torah Study
LEVITICUS 21:1-15

BAMIDBAR – CANTOR SHEILA NESIS

Friday, June 3rd
Candle Lighting at 8:01pm
7:30pm Shabbat Service
Saturday, June 4th
10:30am Torah Study
NUMBERS 5:1-16

EMOR – SOLOIST GITIT SHOVAL

Friday, May 13th
Candle Lighting at 7:42pm
EARLY 6:30pm Shabbat Service
Saturday, May 14th
10:30am Torah Study
LEVITICUS 25:1-13

NASO – GUEST MUSICIAN SHIRA KLINE

Friday, June 10th
Candle Lighting at 8:06pm
EARLY 6:30 Shabbat Service
Saturday, June 11th
10:30am Torah Study
NUMBERS 9:15-10:13

BEHAR – CANTOR SHIRA NAFSHI

Friday, May 20th
Candle Lighting at 7:49pm
7:30pm Shabbat Service
Saturday, May 20th
EARLY 9:00am Torah Study
LEVITICUS 26:3-13

BEHAALOTECHA – CANTOR SHEILA NESIS

Friday, June 17th
Candle Lighting at 8:09pm
7:30pm Shabbat Service
Saturday, June 18th
10:30am Torah Study
NUMBERS 13:25-14:10

BECHUKOTAI – GUEST RABBI REBECCA GUTTERMAN

Friday, May 27th
Candle Lighting at 7:56pm
7:30pm Shabbat Service
Saturday, May 28th
10:30am Torah Study
NUMBERS 1:1-19

SHLACH – CANTOR SHIRA NAFSHI

Friday, June 24th
Candle Lighting at 8:10pm
7:30pm Shabbat Service
Saturday, June 25th
10:30am Torah Study
NUMBERS 16:1-19

ALL WORSHIP SERVICES are held in person and livestreamed on our website (emanuelsinai.org)

TORAH STUDY meets in person and via Zoom.

TALMUD CLASS meets every Wednesday at 12:00 noon in person and via Zoom.

MINYAN is held every Monday at 5:45 pm (except when the office is closed) via Zoom and Livestream Login information can be found in eNews.

CLERGY & STAFF CONTACT INFORMATION

Rabbi Valerie Cohen
rabbivaleriecohen@gmail.com

Talia Mugg, RS Director
tmugg@emanuelsinai.org

Jessica Lamothe, Administrative Assistant
jlamothe@emanuelsinai.org

Christa Benoit, Office Assistant
cbenoit@emanuelsinai.org

Sean Morgan, Business Manager
smorgan@emanuelsinai.org

Steve Contois, Caretaker

RELIGIOUS SCHOOL AND YOUTH NEWS



Shalom From the Religious School!

The school year is coming to an end, and we are busy with activities until our closing day on Saturday, May 7th.

This year we had a wonderful faculty of dedicated, enthusiastic, and creative teachers who created a warm, welcoming, and nurturing environment where students learned about our rich traditions and history. Our teachers worked well with students with varied learning styles and used different techniques to ensure that learning was productive for all students. We are fortunate to have our teachers, and we thank them, and our student assistants (Madrachim) for their commitment to our school and to Jewish education. Thank you to our Tefilla leaders, Daniel Dworman and Marisa Cohen for creating and leading a fun and creative morning service for our students and families, and to our amazing Rabbi Valerie for her guidance and support.

We had many special programs throughout the year that enhanced our Religious School curriculum: Students Education program by grade, Tu B'shevat seder with friends from the Social Action committee, a Religious School Purim Talent show and the very important grade 7 Maot Chitim project, are just a few examples. We integrate formal and informal education to meet the needs of our students and offer experiential learning opportunities for all learners.

A big Todah Rabah (thank you) to all parents for your continued support, commitment, and involvement in our Religious School. Our goal of fostering both friendship and learning in our classrooms has been achieved.

Mazal Tov to our grade 7 students. We are looking forward to their Siyum and promotion to Kehillah High ceremony on the last day of school. Information regarding Kehillah High will be sent in the summer.

Our Religious School continues to grow! I will be busy in the coming months planning for the next school year: book orders, class assignments, hiring faculty, etc. To do so, it is important that you return your school registration by the deadline. Registration and Handbook packets will be mailed and emailed during the summer. First day of the 2022-2023 school year is scheduled for Saturday, September 17, 2022.

For those families in need, Temple Emanuel Sinai offers scholarship support. If you are applying for a scholarship, please email Sean Morgan at smorgan@emanuelsinai.org

Please don't hesitate to contact me with any questions or concerns.

Enjoy your summer break and stay well.

L'Shalom,
Talia



Join us for a full night of fun starting on
Saturday, June 4th at 7:00 p.m. overnight until Sunday, June 5th at 8:00 a.m.
Congregations across the U.S. will be involved in a full night of Torah Study in celebration of Shavuot!
Keep an eye out for the registration info to follow in our upcoming E-News.

IT'S **TORAH** O'CLOCK SOMEWHERE

Join Small Congregations
from across the US for a *full night* of Torah Study
in celebration of Shavuot

Saturday, June 4 - Sunday, June 5
7:00 pm ET - 8:00 am PT

free | registration required

TIKKUN LEIL ⁵⁷⁸²
SHAVUOT

B'NAI MITZVAH



Ava Elizabeth Rogers
Daughter of Michelle & Tim Rogers

Bat Mitzvah May 21, 2022

Ava is a 7th grader at Forest Grove Middle School. She loves spending time with her friends, playing softball and volleyball, and has danced competitively for over 5 years.



Mazal Tov to our Kehillah High Graduate, Maya Belliveau!



VISITING ARTISTS MUSIC SERIES

NAOMI LESS



Friday, May 6th
7:30PM
Shabbat Service

Saturday, May 7th
9:00 AM
Religious School

10:30 AM
Interactive Worship Workshop



SHIRA KLINE



Friday, June 10th
6:30PM
Shabbat Service

Saturday, June 11th
9:00 AM
Religious School

10:30 AM
Interactive Worship Workshop



May 15th 12PM
at Congregation
B'nai Shalom

Wear Blue & White
for
Israel's 74th Birthday

YOM HA'ATZMAUT

Israel Independence Day

**Honoring
Robin & Andy Feldman**

Junior honorees to be announced

To RSVP visit:
<https://jewishcentralmass.org/bonds>

Suggested \$18 donation per family

- Israeli lunch
- Wine tasting
- Drum circle
- Dancing
- Activities for the whole family



B'nai Brith
Worcester Lodge 600



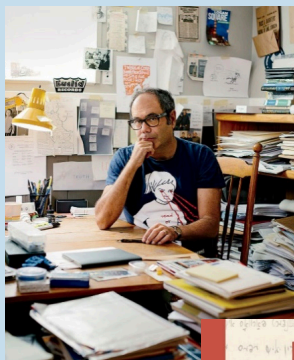
Jewish Federation
OF CENTRAL MASSACHUSETTS

LIFELONG LEARNING

More Lifelong Learning Coming Your Way!

Monday, May 16, 2022

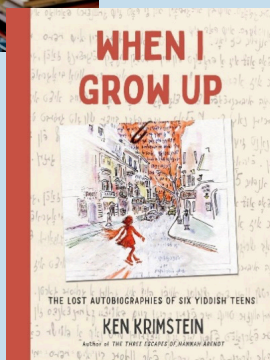
7:00 p.m.



Ken Krimstein

Author of "When I Grow Up: The Lost Autobiographies of Six Yiddish Teenagers"

Ken Krimstein is a New Yorker cartoonist and gifted storyteller. After discovering a trove of essays written by Jewish teens in Poland on the cusp of WWII for a writing contest, Ken Krimstein brought some of their stories to life through his graphic story telling.



Presented in collaboration with the Worcester JCC.

Zoom Login

Meeting ID: 881 2224 4798

Passcode: YidTeen22

Livestream: emanuelsinai.org/live-streams

Facebook: facebook.com/emanuelsinaiworchester

**We then look forward to July and August when we will bring you the third annual
TES Summer Institute
with special Friday night guests from our congregation. Stay tuned!**

Securing Flourishing Jewish Tomorrows

One of the many lessons we can take from this very difficult past couple of years is that no one knows when they might become seriously ill or when their life might unexpectedly come to an end. Surely this is a good time for us each to examine our legacy, to ensure that our estate is distributed to our loved ones and to the institutions that are most important to us in a way that reflects our values and our priorities.

Temple's Life & Legacy Committee works to encourage pledges of future endowment gifts in estate plans. With several dozen Declarations of Intent (DOIs) already in hand, we want to thank those who have indicated that they will include the Temple in their end of life giving. We know that some others have not yet informed us of their similar intentions.

Our Shelanu Legacy Society is part of Life & Legacy, a program of the Harold Grinspoon Foundation coordinated locally by the Jewish Federation of Central Mass. Life & Legacy helps selected Jewish communities like ours, and the synagogues and agencies that serve them, to design and implement endowment campaigns to nurture a culture of planned giving and gratitude, guaranteeing a strong Jewish future.

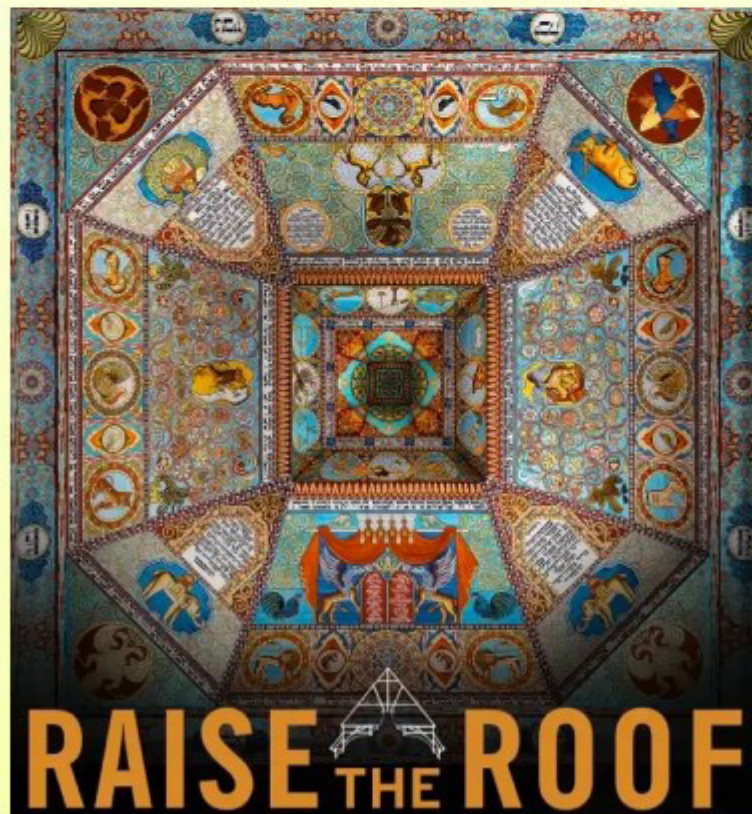
To inquire about how you can participate or to let us know, anonymously if you choose, about a gift to our temple that is already part of your plan, you can contact us at shelanulegacy@emanuelsinai.org.

Please join us for our community Yom HaShoah Commemoration

Tue. April 26, Congregation B'nai Shalom, 117 E. Main St. Westboro
Program begins at 6:30PM, doors open at 6:00PM

Candle-lighting, Poems, Prayers, Readings, & Announcement
the of Pinkhus & Rhoda Gurevich Art & Essay Challenge Prizes.

With a special presentation on Poland's historic wooden synagogues
by Profs. Laura and Rick Brown, founders of the project to make a full
sized replica of the roof of Warsaw's spectacular Gwozdziec
synagogue. The project took over 10 years to complete and involved
artisans and about 250 volunteers from all over the world- a replica of
their work will be shown.



This program is funded by Congregation B'nai Shalom and Jewish Federation of Central Massachusetts. Sponsored by: Congregation B'nai Shalom, Beth Tikvah Synagogue, Beth Israel Congregation, Temple Emanuel-Sinai. Pinkhus & Rhoda Gurevich Art & Essay Challenge Sponsored by B'nai B'rith Commonwealth Worcester Lodge 600.

TES DONATIONS: FEBRUARY 1, 2021 – MARCH 31, 2022

Brotherhood Scholarship Funds

Bobbie Hirshberg in memory of Samuel Hirshberg
Debbie & Marty Jackson in memory of Joan Jackson

Lurier Scholarship Fund

Suzanne & Herbert Feldman in memory of
Jennie Moore & Harold Feldman
Suzanne & Herbert Feldman in memory of Samuel Laipson
Lurier Family in memory of Bennett Gordon

Richard S. Solomon Scholarship Fund

Maxine & Phillip Robbins in memory of Florence Solomon

Building Fund

Allison Levy in memory of Sydney Levy

Caring Committee Fund

Bobbie & Nick Chase in memory of Herman Socofsky

Endowment Fund

Frances Gordon in memory of Janet Lynne Gordon
Frances Gordon in memory of Simon Goldberg
Frances Gordon in memory of Louis Gordon

Floral Fund

Davida & Joel Berman in memory of Frances Jacobson
Debbie & Irwin Thomashow in memory of Edith Ravelson

General Fund

Kimiko Abramoff in memory of Yo shi e Ise
Joanne Bartosik in memory of Esther S. Moranz
Tobey & Louis Burwick in memory of Lilyan Burwick
Carp Family in memory of Howard Fish
Cara & David Cohen in memory of Bracha Kesler
Cynthia & Dennis Cohen in memory of Celia Resnick
Elisabeth Cotton in memory of Sumner & Mirriam Cotton
Ronna & Jonah Cuker in memory of Frieda Roth
Ronna & Jonah Cuker in memory of Seymour Cuker
Carole & Ronald Dorris in memory of Frances Jacobson
Debbie & Steve Feingold in memory of Jacob Levy, Abram
Turow & Sydney Levy
Ceril Fish & Melanie Amir in honor of Rosalie Olds' birthday
Judith & Dick Fow in memory of Harold, Sally & Mel Porter
Jane & Stuart Gerhardt in memory of Ellie Gerhardt
Dianne & Henry Gilbert in memory of Frances Jacobson
Carol & Edward Glick in memory of Edith Seder Riemer
Gould Family in memory of Hannah R. Gould
RoxAnn & Michael Gusar in memory of Sheldon Friedman
Meg Hoey in memory of Florence Hoey
Jaffe, Yaffe & Feingold P.C.
Lois Kahn in memory of Dorothy Bielfeld
Barton Kamp in memory of Harriet N. Kamp

Eydie Kasendorf in memory of Sandra Wilson
Shelley & Gerry Kashuk in memory of Nathan Kashuk
Shelley & Gerry Kashuk in memory of Dorothy Kashuk
Ben Klein in memory of Howard Fish
Phyllis Leibman & Steven Alpert in memory of Lillian Leibman
Fredda Levine in memory of Sarah Bessie Levine
Sue & Jim Patrick in honor of Gene Rubin's birthday
Lee & Chuck Radlo in memory of Catherine McPhillips
Shelley & Todd Rodman in memory of Lorraine Rodman
Cathy & Ron Rosenstock in memory of Eva Rosenstock
Claudia & Les Ross in memory of Lillian Goldin
Patricia Roy in memory of Sugar & Chick Joseph
Anne & Jon Sadick in memory of Betty Kushner
David Sadick in memory of Madelyn Levenson
Stuart Sadick in memory of Alvin Sadick
Paula & Dennis Selvitella in memory of Lynne Horne
Janet Solomon in memory of Annette Schultz
Roberta Sufrin in memory of Lena Shapiro

High Holy Day Appeal

Raechael & Warren Ehrlich
Stacy Justice
Rodolfo Martinez-Rivera

Interfaith Hospitality Network Fund

Marsha, Deborah & Jeffrey Gordon in memory of
Bennett S. Gordon

Lifelong Learning Fund

Patti & Harvey Gould in memory of
Leon Ginsburg & May Gould
Lee & Chuck Radlo in memory of Betty Horn Radlo

Ma'ot Chitim Fund

Thomashow Family in memory of Morris Cohen

Music Fund

Lisa Balegno & Lenore Lerner in memory of Shirley Lerner
Emily Ritz Gerber & Michelle Gerber in memory of Roslyn
Schorr Ritz
Martha Grace in memory of Marcia Herman Pliner
Martha Grace in memory of Milton Pliner
Harriett Katz in memory of Mel Katz
Avis & Nick Pilson in memory of Symme Berman Kramer
Lee & Chuck Radlo in memory of George McPhillips

Oneg Fund

Hazel Wightman

President's Fund

Ellen, Richard & Marissa Levitt in memory of Howard Fish
Paula & Dennis Selvitella in memory of Emily Kapitulik

DONATIONS CONTINUED

Rabbi's Fund

Kimiko Abramoff in memory of Torizo Ise
Robert Bachrach
Iris & Micah Chase in honor of Becky & George Pins
Rabbi Valerie & Jonathan Cohen in honor of Becky & George Pins
Trudy & Merrill Cohen in memory of Bernice Cohen
Ronna & Joe Cuker in honor of Becky & George Pins
Anne Diamond in memory of Dorothy Levine
Raechael & Warren Ehrlich
Juliet Feibel & Ken MacLean in honor of Becky & George Pins
Helene & Lawrence Freed in memory of Samuel Perler
Merilee & Alan Freeman in honor of Becky & George Pins
Paula Freeman in memory of Anita & Samuel Freeman
Sandra Goldman wishing Sara Bronshtein a speedy recovery
Susan & Richard Gotz in honor of
Sue & Richard Seder's grandson' Bar Mitzvah
Susan & Richard Gotz in honor of
Trudy & Merrill Cohen's grandson' Bar Mitzvah
Patti & Harvey Gould in honor of Becky & George Pins
Meg Hoey & Mark Birnbaum in honor of Becky & George Pins
Beverly Hurwitz in memory of
Bernard Hurwitz & Sharon Lee Hurwitz
Karen & Michael Kagan in honor of Becky & George Pins
Cindy Kalish in honor of Becky & George Pins
Shelley & Gerald Kashuk in memory of Nathan Witkin
Deborah Kelly in memory of Charles Kelly
Valerie Kerxhalli & Jesse Caplan in honor of Becky & George Pins
Jesse, Valerie, Isabelle & Rose Kerxhalli-Caplan in memory of
Burton Caplan
Ellyn Lazar in honor of Becky & George Pins
Mel Lubowitz & Family in memory of Dolores Lubowitz
Mel Lubowitz & Family in memory of Bessie & Jack Lubowitz
Mel Lubowitz & Family in memory of Jean & Hyman Cohen
Beth-Ann Martunas in memory of Bessie Coblentz
Ann Merritt & Richard Fox in memory of Melvin Fox
David Meyers & Diane Meyers Doerfler in memory of
Gertrude Meyers
Marlene & David Persky in honor of Becky & George Pins
Lee & Chuck Radlo
Shelley & Todd Rodman in honor of Becky & George Pins
Elaine Rosen in memory of Rose Rosenbloom
Stuart Sadick
Stuart Sadick in honor of Becky & George Pins
Yael Savage in honor of Becky & George Pins
Paula & Dennis Selvitella in honor of Becky & George Pins
Deb & Mark Shear in honor of Becky & George Pins
Judy & Allan Shriber in honor of Becky & George Pins
Judy & Allan Shriber in memory of
Tena Finkelstein & Rona Finkelstein
Marcy & Fred Shuster in honor of Becky & George Pins
Sandy Sotak in honor of Becky & George Pins
Jay Stiller & Family in honor of Becky & George Pins

Karen & Tom Thomsen in honor of Becky & George Pins
Carla Royak-Volturo & Gregg Volturo in honor of
the birth of their granddaughter, Scarlett Volturo Wilson
Gail Zarr in memory of Michael Sclar

Religious School Fund

Patti & Harvey Gould in memory of Lynne Horne
Patti & Harvey Gould in memory of Charles Fleurant
Patti & Harvey Gould in honor of Sam Carrigan's Bar Mitzvah
Laura Myers in memory of Evelyn Myers
Becky & George Pins in memory of Traude Pins
Barbara & Arnold Ravelson in honor of
Harriette Chandler's retirement
Barbara & Arnold Ravelson in honor of
Eugene Rubin's special birthday

Torah Fund

Lee & Chuck Radlo in memory of Milton Radlo
Jay Stiller in memory of Edward Stiller

Walls to Bridges Fund

Karen & Tom Thomsen in memory of Eva Tischelman



TELEPHONE
508-485-6653
FAX
508-485-1311

JEFFREY D. LEVINE, M.D.

PRACTICE LIMITED TO THE EYE

372 CHANDLER STREET
WORCESTER, MASSACHUSETTS 01602

Mechanical Contractor

J. J. BAFARO, INC.

Plumbing • HVAC • Sheet Metal
Design • Installation • Service
Commercial • Industrial • Residential

SERVING MASSACHUSETTS
FOR OVER FOUR DECADES!



9-13 Winter St., P.O. Box 943, Worcester, MA 01613

WWW.JJBAFARO.COM

Phone: 508-757-7429 | Fax: 508-792-3922



OVER 30 YEARS EXPERIENCE

YOUNG'S



TREE SERVICE

***"SPECIALIZING IN
DANGEROUS TREES"***

Fully Insured • Free Estimates

**JOHN H. YOUNG, JR.
508-885-TREE
1-800-660-5358**



LevensonSmile

**Experience Exceptional Dental Care
In Worcester, MA**



Dr. Stanley Levenson DMD
(508) 731-3940
<https://www.levensonsmile.com/>
Office located at 9 Linden St Worcester, MA 01609
Membership plans and payment
options

**LAW OFFICE OF
David T. Bunker, Esquire**



**17 TATTAN FARM ROAD
WORCESTER, MA 01605
508-864-3584
dbunker0453@charter.net**

GENERAL PRACTICE

**Specializing in:
Business Law**

**Condominium Law
Estate Planning**

NORTH OXFORD MILLS Carpet and Flooring

The best values in flooring since 1970

Robert Mack Commercial/Residential Markets

3 Clara Barton Road • North Oxford, MA 01537
P: 508-987-8521 • Cell: 508-887-6656 • Fax: 508-987-3413
rob@northoxfordmills.com • www.northoxfordmills.com



Carpet • Braided Rugs • Hardwood • Ceramic • Rubber • Vinyl • Tile • Linoleum



The
FEINGOLD Companies

Feingold Insurance Agency

Feingold Financial Management

Feingold Employee Benefit Services

Saul F. Feingold

Lisa M. Hirbour

David M. Dimenstein

Two Chestnut Place

508-831-9500

22 Elm Street

800-370-1718

Worcester, MA 01608-1727

FAX: 508-797-4030

On the Web at www.Feingoldco.com

College Resource Associates

Personal Guidance for Students and Families Preparing for College



Empowering Students for College Success



LET US HELP YOU

- * Identify 'best fit' colleges
- * Understand application and testing options
- * Prepare effective essays and resumes
- * Ace admission interviews
- * Manage performing arts requirements
- * Obtain and evaluate financial aid awards

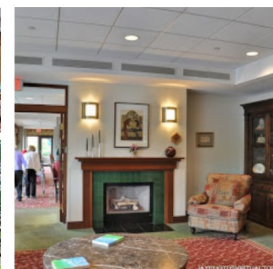
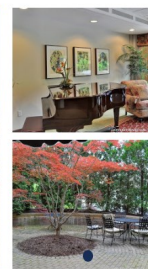
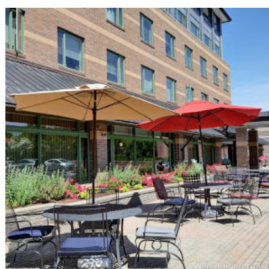
Apply with confidence to colleges that will be thrilled to have YOU as a student!

Contact us at (508) 757-8920 or
Joan@CollegeResourceAssoc.com

Assisted Living

the way it should be.

Spacious Apartments | Beautiful Courtyards | Comfortable Common Areas



- Kosher Dining
- Specialized Memory Care Unit
- Respite Care
- All Inclusive Pricing
- 24/7 Professional, Caring Staff
- Transportation to Appointments
- Social, Cultural & Educational Activities
- Housekeeping & Linen Services
- Onsite Shabbat and Religious Services
- Covid Response That is Diligently Safe & Creatively Fun

*Luxury, Convenience,
and Independence
for Seniors*

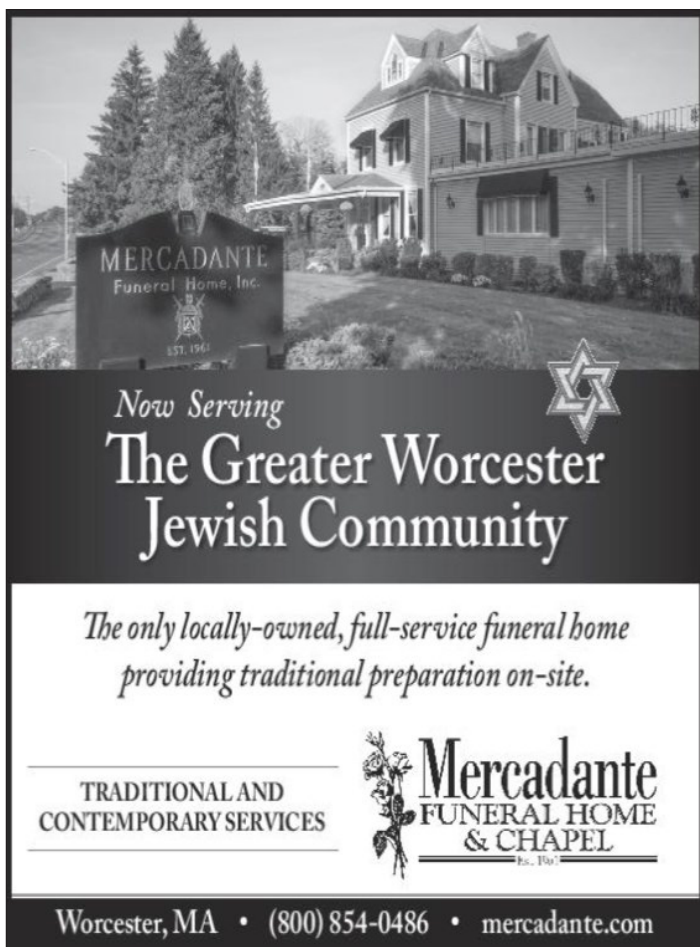


**Eisenberg
Assisted Living**
An Affiliate of Jewish
Healthcare Center

Open for Admissions

631 Salisbury St, Worcester, MA | (508) 713-0549

www.eisenbergal.com



MERCADANTE
Funeral Home, Inc.
EST. 1961

Now Serving
**The Greater Worcester
Jewish Community**

*The only locally-owned, full-service funeral home
providing traditional preparation on-site.*

TRADITIONAL AND
CONTEMPORARY SERVICES

Mercadante
FUNERAL HOME
& CHAPEL
EST. 1961

Worcester, MA • (800) 854-0486 • mercadante.com



Mike Wolpert

www.wolpert.com

18 John Street Place

Worcester, MA 01609

(508) 459-4700

Since our beginning, our business has been *people* and their financial well-being. It's evident in good times, with decisions focused on the long term, and crucial when circumstances become difficult. That continued emphasis on people – our clients, communities, advisors and associates – gives us purpose, strength and a way forward. Today. And *always*.

FRED J SHUSTER
NEWBURY INVESTMENT PARTNERS
Registered Principal, RJFS
fred.shuster@raymondjames.com

22 Elm Street, Suite 330
Worcester, MA 01608
(508) 767-1013
newburyinvestmentpartners.com

RAYMOND JAMES

Securities offered through Raymond James Financial Services, Inc., member FINRA/SIPC. © 2020 Raymond James Financial Services, Inc., member FINRA/SIPC. Investment advisory services offered through Raymond James Financial Services Advisors, Inc.

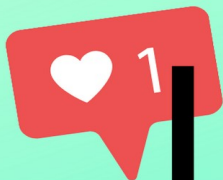
**CELEBRATING A CENTURY OF
SERVICE TO OUR COMMUNITY.**

SEDERLAW

100^{YEARS} ANNIVERSARY

WWW.SEDERLAW.COM | 508.757.7721

WORCESTER | METROWEST



Let's Connect!

Follow us online for the latest updates!



Like us on Facebook:
facebook.com/emanuelsinaiworcester

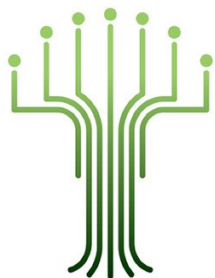
Follow us on Instagram:
[@templemanuelsinai](https://www.instagram.com/templemanuelsinai)



Watch our live streams:
<https://emanuelsinai.org/live-streams>

Read the latest blog:
<https://emanuelsinai.org/category/blog>





Temple Emanuel Sinai
661 Salisbury Street
Worcester, MA 01609
www.emanuelsinai.org

Address Service Requested

Nonprofit
US Postage

PAID

Permit #1707
Worcester, MA

Richard Perlman*

Serving the Jewish communities of Worcester and Worcester County

Miles Funeral Directors of Holden

508.829.4434

Taharah (religious preparation) is performed on-site
by the Worcester Chevra Kadisha



Richard S. Mansfield
Funeral Director
www.milesfuneralhome.com

Contact Richard Perlman
Cell: 508.769.7017

*Lic - Type 6