

• A NOTE FROM RABBI VALERIE



Hillel said:

Do not separate yourself from the community.
Do not trust in yourself until the day of your death.
Do not judge another person until you have reached their place.
Do not say something that cannot be understood [trusting] that in the end it will be understood.
Say not: 'when I shall have leisure I shall study'; perhaps you will not have leisure.

-Pirkei Avot 2:4

This passage from Pirkei Avot, the teachings of our ancient sages, has many lessons to impart. I included the entire passage because I wanted to emphasize the connection between the first line and the last line: Torah study is a way of connecting with the community. Our tradition teaches that when two (or more) people study together, the Shechina, God's presence, dwells among them. This is how much Judaism values the community that develops out of shared study. And if not now, when? If we wait for "free time" to start anything in our lives, there is a good chance it will never happen. We find time for our priorities.

Now, I have heard many people say that they don't know enough about the Torah to attend Torah study, and they're intimidated by the people who have been attending for many years. And I can understand this concern, as there are people who are very wise in the group and have more knowledge than even I, the Rabbi.

Still, Torah study is about more than knowledge. One of the ways we interact with Torah is through the lens of our own experience. We read the text, and even if it is the first time we've read a particular passage, we can share ideas and ask questions based on those experiences. Our encounter with the text is influenced by who we are, and we relate to it from our own perspective.

When people say to me that they don't attend Torah Study because they don't know enough about Torah, my response is always: "You don't need to be an expert in Torah, you only need to be an expert in you. And no one knows more about you than you do." In addition, the folks who regularly attend Torah study are friendly, welcoming, open, and most of all non-judgmental. We're just excited when new people join us giving our group the opportunity to gain new perspectives.

Hillel said:

Do not separate yourself from the community...

Say not: 'when I shall have leisure I shall study'; perhaps you will not have leisure.

Now is a great time to give Torah Study a try. We look forward to learning with you and from you on Shabbat mornings, usually at 10:30 (check the calendar – sometimes at 9:00!), both on Zoom and in person.

PRESIDENT'S MESSAGE



AN UPDATE TO BEGIN 2022

I think that since COVID arrived, sometimes people may feel a little “out of the loop.” So, I thought that I would bring you up to date as we begin 2022. Here are some things that are going on in our congregation, things that you may not see in the eNews, read in this Bulletin, or even hear about because so much goes on behind the scenes at TES. So... here goes!

First, and I would be remiss in not putting this first, I'd like to welcome Gitit Shoval to our TES family as our new Music Director and Cantorial Soloist. I feel that we have hit the jackpot here! She is a talented professional, who will bring us much joy. She will begin her time with us on July 1, 2022, but in the meantime, she will be a guest soloist for many upcoming Shabbats. You should try to attend and introduce yourselves - you'll find her warm and engaging.

Also, we are having Torah covers cleaned and made to look fresher. Sandy Sotak, Renee Malowitz, and Debbie Bunker have begun the process of evaluating, and some covers have been taken to be cleaned already. And the Sofer who has been working on one of our Torah scrolls is in touch with us, and we will be getting that one back at some point, also all freshened up.

Some folks have asked about the “Sinai Tapestry.” Thanks to Richard Levitt, it has been brought to the Eisenberg Healthcare Center and lovingly put up on the wall in their Auditorium. At some point, I'd like to organize some folks to write up a history of this piece so we can all know and validate the people who created it. If you're interested, please come forward.

And the Cab Card has been repurposed! Thanks to the Wolf Family who originated this program, the Board has approved that it now can be used for giving members rides not only to and from services, but also to doctor's appointments, to the pharmacy, or even to the grocery store. This is a great thing we can do for our members who don't drive. It will be managed by the new and improved Car-ing Committee, so you should call the office if you can make use of this service, and also to donate to the Cab Card Fund. As I mentioned, we can help people in our immediate community.

And speaking of donations, the brand new President's Fund has been established and approved by the Board! This fund will be used much like a discretionary fund so that if there are unexpected programming expenses, the president will have the financial flexibility to handle them. The Fund will be used by all Presidents going forward and will be managed in the same fashion as the Endowment. It will be there for the benefit of the Congregation, and for the future of it as well. So, by your donations, you are helping the entire TES Community to have great programming or something extra.

The Board and I are working hard to continue to make TES a great place to be. There is artwork to repurpose/sell, technology to install, and who knows what else will come to light. I'm hoping if anyone would like to be involved, that you will speak to me, or to another Board member. All hands working together makes for true community, and WE NEED YOU! Happy, healthy 2022!

L'Shalom,
Paula Selvitella, President

JANUARY - FEBRUARY 2022 WORSHIP SERVICES

SHABBAT BO

CANTOR SHIRA NAFSHI

Friday, January 7th
Candle Lighting at 4:14pm
7:30pm Shabbat Service
Saturday, January 8th
10:30am Torah Study
EXODUS 10:1-20

SHABBAT B'SHALLACH

CANTORIAL SOLOIST GITIT SHOVAL

TORAH SCROLL READING

Friday, January 14th
Candle Lighting at 4:21pm
6:30pm EARLY Shabbat Service Saturday,
January 15th
10:30am Torah Study
EXODUS 13:17-14:14

TU BISH'VAT

Monday, January 17th
OFFICE CLOSED

SHABBAT YITRO

SPECIAL GUEST CANTOR ROSALIE WILL

TORAH SCROLL READING

Friday, January 21st
Candle Lighting at 4:30pm
7:30 Shabbat Service
Saturday, January 22nd
10:30am Torah Study
EXODUS 18:1-23

SHABBAT MISHPATIM

VISITING MUSICIAN SHIRA KLINE

Friday, January 28th
Candle Lighting at 4:39pm
7:30 Shabbat Service
Saturday, January 29th
9:00am Torah Study
EXODUS 21:1-19

SHABBAT T'RUMAH

MUSIC TBD

TORAH SCROLL READING

Friday, February 4th
Candle Lighting at 4:48pm
7:30pm Shabbat Service
Saturday, February 5th
9:00am Torah Study
EXODUS 25:1-22

SHABBAT T'TZAVVEH

MUSIC BY RABBI REBECCA

Friday, February 11th
Candle Lighting at 4:57pm
6:30pm EARLY Shabbat Service
Saturday, February 12th
10:30am Torah Study
EXODUS 27:20-28:21

SHABBAT KI TISSA

CANTORIAL SOLOIST GITIT SHOVAL

TORAH SCROLL READING

Friday, February 18th
Candle Lighting at 5:06pm
7:30pm Shabbat Service
Saturday, February 19th
10:30am Torah Study
EXODUS 31:1-32:6

SHABBAT VA-YAKHEL

MUSIC BY JODI BLANKSTEIN

Friday, February 25th
Candle Lighting at 5:14pm
7:30pm Shabbat Service
Saturday, February 26th
10:30am Torah Study
EXODUS 35:1-20

**All Shabbat Services will be held In-Person and Online*

ALL WORSHIP SERVICES are held via Livestream on our website (emanuelsinai.org) and on our Facebook page.

TORAH STUDY meets *IN PERSON* with a Zoom option also available.

TALMUD CLASS meets every Wednesday at 12:00 noon *IN PERSON* with a Zoom option also available.

MINYAN is held every Monday at 5:45 pm (except when the office is closed) *IN PERSON*, via Zoom and Livestreamed. Login information can be found in eNews.

CLERGY & STAFF CONTACT INFORMATION

Rabbi Valerie Cohen
rabbivaleriecohen@gmail.com

Talia Mugg, Religious School Director
tmugg@emanuelsinai.org

Jessica Lamothe, Administrative Assistant
jlamothe@emanuelsinai.org

Christa Benoit, Office Assistant
cbenoit@emanuelsinai.org

Sean Morgan, Temple Administrator
smorgan@emanuelsinai.org

Steve Contois, Caretaker

RELIGIOUS SCHOOL AND YOUTH NEWS



Shalom from the Religious School!

Happy secular New Year to you and your family!

Tu B'Shevat, the 15th of Shevat on the Jewish calendar, will be celebrated on Monday, January 17, 2022. This is the day that marks the beginning of a "new year" for trees. This is the season in which the earliest-blooming trees in the Land of Israel emerge from their winter sleep and begin a new fruit-bearing cycle.

We mark the day of Tu B'Shevat by eating fruit, particularly from the kinds that are singled out by the Torah in its praise of the bounty of the Holy Land: grapes, figs, pomegranates, olives, and dates. On this day we remember that "man is a tree of the field" (Deuteronomy 20:19) and reflect on the lessons we can derive from our botanical analogue. Our students will learn about the meaning of this important Holiday by participating in various activities and lessons, as well as creating their own poems and short skits.

Every Shabbat at our school, the students study the weekly Torah portion. If you would like to discuss the Torah portions ahead of time at home with your child, please check these child friendly websites.

www.urj.org
www.myjewishlearning.com
www.aish.com
www.chabad.org

Snow Cancellation Policy

As the winter weather is soon upon us, please note that Temple Emanuel Sinai Religious School is following the Worcester Public Schools snow cancellation policy. If there is no school for the Worcester Public Schools, we will also be cancelled. If there is an early dismissal for the Worcester public schools OR for the Wachusett Regional schools, we will be cancelled. An email will be sent to the parents.

Calendar Update

1/ 15 - No school MLK weekend
2/11 - 7th graders host Shabbat early service at 6:30pm
2/21 - 2/25 - February break

Stay warm and safe!
Talía



B'NAI MITZVAH

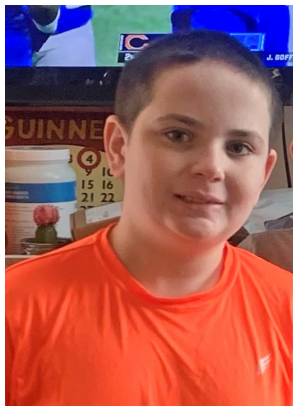


Brienne Belliveau

Daughter of Stacy Justice and Lenny Belliveau

Bat-Mitzvah February 5, 2022

Brienne loves dancing. When she is not doing school work or practicing for her Bat-Mitzvah, she can be found at the studio dancing. Brie also enjoys crafts and cooking and spending time with family, friends and her dogs.



Samuel Carrigan

Son of Liza & John Carrigan

Bar Mitzvah Thursday, February 24, 2022 at 10:45am

Livestreamed at www.tbefoca.org/live-streaming

Samuel trained for his Bar Mitzvah at TES, and you can watch him become Bar Mitzvah in South Florida where his grandparents live. Samuel loves movies, family, and the color orange. He is a reviewer of movies, a math whiz and such a joy to be around. Samuel is volunteering at The Ancient Order of The Hibernians aka The Irish Club.

PURIM ANNOUNCEMENT

CALLING ALL TALENT!

Join us for a special Purim talent show, Wednesday, March 16, 2022 from 5:30-6:30pm

Instead of a traditional Purim Spiel, we will be showcasing all the talented members of our community Purim Carnival to follow immediately after the talent show

If you are interested in participating, please fill out the form available here:
www.templemanuelsinai.shulcloud.com/form/Purim2022

Please include the name of your act, the number of people participating, any materials you may need for the act, and your email and phone number.
In person and video submissions will be accepted.

Dress Rehearsal for the talent show will be held at Temple on Saturday, March 12th at 11:00am

GITIT SHOVAL – NEW MUSICAL DIRECTOR/CANTORIAL SOLOIST HIRE ANNOUNCEMENT

BIG NEWS!

It is our extreme pleasure to announce that the Music Search is over! We have secured Gitit Shoval as our Musical Director and Cantorial Soloist. She comes to us with great credentials and is well qualified to lead every possible musical realm we can find for her to lead. You may want to check her out on YouTube. We are lucky to have such an accomplished musician joining us, and we hope that it will be a long and contented relationship. Gitit will begin her time with us on July 1, 2022, but she will be a guest soloist at a few services beginning in January...you should come and listen! Introduce yourself to her and make her feel welcome; she is a warm and gracious lady, and we are delighted to have her in our TES family.

See Gitit at Shabbat services January 14th and February 18th!



SPECIAL GUEST CANTOR ROSALIE WILL - JANUARY 21ST



Cantor Rosalie Will brings more than 25 years of experience in training songleaders, leading worship, and creating singing communities. After 17 years with Temple Emanuel in Kensington, MD, she now consults with congregations on issues of worship, music, and synagogue transition, and she mentors clergy in the field. She is founder and director of Sing Unto God, Inc., a non-profit dedicated to elevating the practice and promotion of meaningful worship and of singing together. She produces events on the cutting edge of worship and music thinking, trains communal singing professionals on best principles for communal singing as well as singing for justice, and is about to publish a narrative book with Transcontinental Music Publishing entitled *Songleading: A Work of Art*. As a performer, she records and tours as a member of the quartet So Is Life. Rosalie also supports the Union for Reform Judaism (URJ) on issues of worship and music.

VISITING ARTISTS MUSIC SERIES



Shira Kline

JANUARY 28
7:30pm Shabbat
Service

JANUARY 29
9:00am Religious
School

10:30am
Worship Workshop



MARCH 18-19, 2022
Eliana Light



APRIL 1-2, 2022
Rabbi Josh Warshawsky



MAY 6-7, 2022
Naomi Less



A CALL FOR ACTION IN OUR COMMUNITY!

Help families living in the
Interfaith Hospitality Network (IHN) family shelter

Please contribute today! Every dollar makes an impact!

The TES hosting period for IHN was 12/12/21 – 1/2/22. The IHN Shelter, located in Worcester, houses up to 5 families that don't qualify for state funded shelter. TES volunteers would normally spend evenings and overnights at the shelter.

Due to the pandemic, our focus is raising crucial funds to hire staff in place of our volunteers. IHN also relies on donations for food, case management and operational expenses.

The need is greater than ever! Please contribute today!

100% of funds collected are donated to IHN

- Make checks payable to *TES*, indicate *IHN fund* in memo line and mail to Temple Emanuel Sinai 661 Salisbury St. Worcester, MA 01609
- Donate through the TES website; click on the donations tab, under payment details in the "Type" drop down select Interfaith Hospitality Network

**Donations may be made in honor of a person, special event, or
in memory of a loved one.**

Thank you for your support!

FOOD DRIVE RESULTS

This year's High Holidays/Sukkot food drives yielded the following results.

Members donated 244 pounds of food, which Rachel's Table distributed to several Social Service agencies in our community. In addition, the Sukkot donations enabled Rachel's Table to purchase one case of bananas per week, which will be delivered to Abby's House. They will continue to receive this donation for the next six months and the residents of Abby's House appreciate our help.

Thank you to everyone who made this happen.

LIFELONG LEARNING

MARK YOUR CALENDARS! BYOB (BRING YOUR OWN BAGEL) SUNDAY SPEAKER SERIES CONTINUES!

Sunday, January 9, 2022
10:00 a.m.

Mark Epstein

Author of They Call Me Pathfinder: A True Story of One Man's Mission to Improve Education in South Carolina

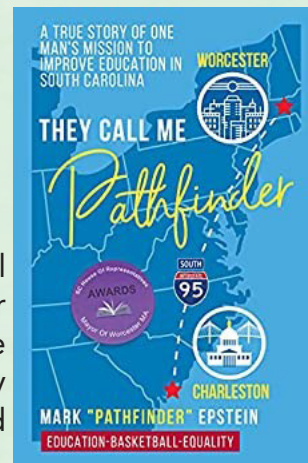


Worcester's own Mark Epstein explores his personal journey to overcome early challenges and discover his mission to improve the world through sports. He has worked tirelessly to promote educational equality in the Deep South, receiving the S. Carolina MLK Award in 2016. His book has been called "inspirational" and has garnered numerous citations and commendations. Mark is the son of Charlie Epstein, store owner of Charlie's Surplus on Water St., Worcester and famed sponsor of Charlie's 10-Mile Road Race.

Zoom Login - Meeting ID: 840 7157 1806 Passcode: Bagels5782

Livestream: emanuelsinai.org/live-streams

Facebook: facebook.com/emanuelsinaiworchester



Sunday, March 6, 2022
10:00 a.m.

Jenna Blum

International bestselling author and one of Oprah's Top 30 women writers.



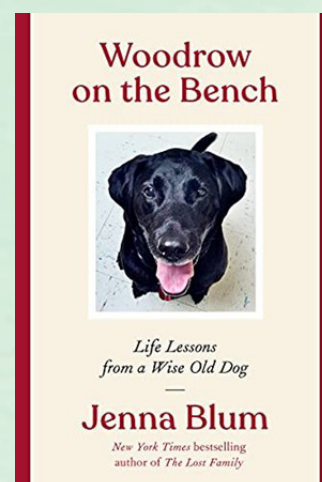
She will discuss her memoir *Woodrow on the Bench: Life Lessons from a Wise Old Dog*. With additional insights from Rabbi Valerie about pets and community from a Jewish lens. Presented in collaboration with the Worcester JCC.

Zoom Login - Meeting ID: 860 6001 6031

Passcode: Bagels5782

Livestream: emanuelsinai.org/live-streams

Facebook: facebook.com/emanuelsinaiworchester



TES DONATIONS: OCTOBER 1, 2021 – NOVEMBER 30, 2021

Brotherhood Scholarship Funds

Debbie & Marty Jackson in memory of Norma Ginsberg
Becky & George Pins in memory of Robert Pins
Lee & Chuck Radlo in memory of Carl Radlo
Sheila Tarlin in memory of Milton Williams

Anne & Mac Levine Scholarship Fund

Joan & Richard Freedman & Family in memory of Anne Levine

Manuel G. Berman Scholarship Fund

Davida & Joel Berman in memory of Manuel Goodman Berman

Camp Scholarship Fund

Linda Klein in memory of Samuel, Catherine & George Klein and Lillian & Frank Protano
Judy & Allan Shriber in honor of Jacob Horne's Bar Mitzvah
Judy & Allan Shriber in memory of Maurice J. Ravelson

Caring Committee Fund

Alberta Chase in memory of Rose E. Brown & Paul Chase
Bobbie & Nick Chase in memory of Audrey Chase
Bobbie & Nick Chase in memory of Harry Levenson
Bobbie & Nick Chase in memory of Libby Socofsky
Holly Gewandter
Jill Goldstein Szafran in memory of Martha Goldstein

Endowment Fund

France Gordon & Margery Gordon in memory of Shirley Sterman

General Fund

Mark Aaronson in memory of Sylvia Aaronson
Kathleen & Paul Alony in memory of Aliza Diamond & Josef Alony
Nancy Benjamin in memory of Hank Benjamin & Alfred Garber
Ruth Berman & Family in memory of Myron Berman & Alan Berman
Elaine Chase in memory of Arthur Chase
Robyn & Hugh Cooper in memory of Elaine P. Faber
Brenda Dean in memory of Sadie Richmond
Herbert Dean in memory of Joan Dean
Saul Feingold
Ceril & Howard Fish in appreciation of the Holocaust Program
Barbara N. Freedman in memory of David N. Freedman
Paula Freeman & Jeremy Soybel in memory of William M. Soybel
Felice Kane in memory of Isobel Kane
Miriam Gallant in memory of Florence S. Kanter
Marsha, Deborah & Jeffrey Gordon in memory of Mary Gordon
Gow Family in memory of Marc Witkes
Ann Greenberg in memory of Miriam Goldberg
Sandra Horvitz in memory of Shirley Farber
Doriann & Richard Jaffee in memory of Dorothy & Robert Jaffee
Abba Kirstein in memory of Beth Rapkin
Abba & Alan Kirstein in memory of Philip Kirstein
Phyllis Leibman & Steven Alpert in memory of Leon Leibman

Fredda Levine in memory of Henry David Levine
David Levitin & Elana Rosenbaum in memory of Gertrude Levitin
Lurier Family in memory of Howard Lurier
Beth-Ann Martunas in memory of Herman Coblentz
Carole & Burton Orland in memory of Gail L. Topol
Prizant Family in memory of Marilyn Kass
Lee & Chuck Radlo in memory of Marion Lent
Lee & Chuck Radlo in memory of Rose Horn
Lee & Chuck Radlo in memory of Joan Ciccarone
Barbara & Arnold Ravelson in memory of M.J. Ravelson
Eleanor Rodenstein in memory of Marilyn Kass
Shelley & Todd Rodman in memory of Douglas Rodman
Elaine Rosen in memory of Herman Rosen
Elana Rosenbaum & David Levitin in memory of Morris Levitin
Jane & Ralph Rothstein in memory of Marilyn Kass
Safer Family in memory of Barbara Safer
Deb, Mark, Erica & Alyssa Shear in memory of Myron Berman & Gerald Shear
Roberta Sufrin in memory of Myer Shapiro
Roberta Sufrin in memory of Martin Budish
Tapper Family in memory of Howard Gordon
Tapper Family in memory of Samuel Louis Tapper
Sheila & Ted Weiner in memory of Lena Weiner
Mara Yerow in memory of Leonard Yerow

High Holy Day Appeal

Margo Austein & Steve Miller
Nancy Benjamin
Nancy Berley & Scott Dworman
Barbara Beroll
Joan & Norman Bress
Cynthia & Dennis Cohen
Catherine Colinvax & Phillip Zamore
Ronna & Jonah Cuker
Amy & James Currie
Mel Cutler
Carole & Ronald Dorris
Marshall Farmelant in memory of Melvin Farmelant
Gerald Finkle
Leslie Fish & Jerry Gurwitz
Joan & Richard Freedman
Paula Freeman & Jeremy Soybel
Kathleen & Stuart Glass
Judith Gluck
Marilyn Goldsmith
Erin Goldstein & German Chiriboga
Adele & Donald Gross
Lisa Gussak & Gian Mallozi
Amy & Howard Hammond
Karen & Jeffrey Horne
Donna & Harry Hubbard

DONATIONS CONTINUED

Patty & Don Jacobs
Elisabeth & Darragh Kasakoff
Eydie Kasendorf
Wendy & Sheldon Katz
Deborah Kelly
Valerie Kerxhalli & Jesse Caplan
Debi Lang & Lawrence Haley
Ellyn Lazar
Frances & David Lubin
Brenda & Jonathan Mack
Virginia Marchant
Sandy Meltzer
Laura Myers
Carole & Burton Orland
Carolyn & Dennis Powers
Barcy Proctor
Valerie & Ian Rifkin
Eileen & Paul Robbins
Elana Rosenbaum & David Levitin
Cheryl & Douglas Ross
Barbara Rossman
Eugene Rubin
Hannah & Maurice Sachs
Anne & Jonathan Sadick
David Sadick
Mara & Gary Safer
Yael Savage
Valerie & Mark Schrank
Elizabeth Schwartz
Zelda & Paul Schwartz
J. Robert Seder
Sue & Richard Seder
Deb & Mark Shear
Marcy & Fred Shuster
Esta & Jeffrey Singer
Carol & Michael Sleeper
Brian Spind
Ellen & Conrad Swartz
Brian Treitman
Amy & Simon Waters
Sheila & Ted Weiner
Steven Willens
Cynthia & Michael Wolpert
Sarah Noble-Young & John Young
Marshall Zamansky

Alberta Chase
Elisabeth Cotton
Ronna & Jonah Cuker
Janyce & Joel Cutler
Lori-Ann Cutler with gratitude to Cantor Jonathan Kohan
Carol & Joseph DiGregorio
Diane Doerfler & David Meyers in memory of Jessie Meyers
Diane & Leonard Doerfler in honor of their granddaughter,
Camila Rose Peraza Doerfler
Carole & Ronald Dorris
Robert Dyer
Barbara & Gary Englander
Marsha, Deborah & Jeffrey Gordon in memory of
Howard M. Gordon
Cynthia & Evan Graber
Ann Greenberg
Leslie Fish & Jerry Gurwitz
Michael Gusar
Merilee & Alan Freeman
Ellen & Richard Gansler
Patti & Harvey Gould
Judy Hayes in honor and gratitude of family and friends
Susan & Ronald Hayes in honor of
Michelle Beaver for her service to IHN
Patty & Don Jacobs
Barton Kamp
Elisabeth & Darragh Kasakoff
Eydie Kasendorf
Wendy & Sheldon Katz
Deborah Kelly
Andrea Kendall & David Isenberg
Valerie Kerxhalli & Jesse Caplan
Janet & Barry Krock Otilie & Jeffrey Levine
Jennifer Lish
Jodie & Tim McInerney
Marilyn & Richard Perlman
Marlene & David Persky
Becky & George Pins
Carolyn & Dennis Powers
Lee & Chuck Radlo
Shelley & Todd Rodman
Elana Rosenbaum & David Levitin
Charles Rosenblum
Paula & Neal Rosenblum
Patricia Roy
Anne & Jonathan Sadick
Leonarda Santiago & Zacharias Rivera
Yael Savage
Valerie & Mark Schrank
Carol Seager
Paula & Dennis Selvitella
Deb & Mark Shear
Judy & Allan Shriber

Interfaith Hospitality Network Fund

Margot Barnet & David Coyne
Paula Bellin & Andrew Freedman
Ruth Bibace
Joan & Norman Bress
Debbie & David Bunker

DONATIONS CONTINUED

Sheryl Sigel
Shirley Siff
Stephen Slaten
Sandy Sotak
Barbara & Joel Strogoff
Karen & Tom Thomsen
Carla Royak Volturo & Gregg Volturo
Joan & Robert Yood

Lifelong Learning Fund

Patti & Harvey Gould in memory of Elaine Stiller & Marvin Malowitz and congratulations to Mark Shear for his Israel Bonds Honor

Barcy Proctor in memory of Barbara Wilensky Gopen
Barcy Proctor in memory of Irving Wolf
Lee & Chuck Radlo in memory of Marvin Malowitz
Paula & Dennis Selvitella in memory of Marvin Malowitz

Music Fund

Margot Barnet & David Coyne in honor of Cantor Jonathan Kohan
Horne Family in honor of Jacob Horne's Bar Mitzvah
Avis & Nick Pilson in memory of Lynn Breitbord Goldberg
Avis & Nick Pilson in memory of Jacob Pilson
Pamela & Alan Sigel in memory of Richard L. Sigel
Sandy Sotak in memory of Roger Morrow
Barbara & Joel Strogoff in memory of Richard L. Sigel

Prayerbook Fund

Roberta Sufrin in memory of Lillian Shapiro
Roberta Sufrin in memory of Dora Shapiro

President's Fund

Anthony Selvitella & Patrick Murphy

Rabbi's Fund

Margo Austein in memory of George Austein
Margot Barnet & David Coyne in honor of the special birthday of Bernard Jacobs
Budish Family in appreciation
Debbie & David Bunker in memory of Horace Thayer Bunker
Anne & Stuart Diamond in memory of Freda Diamond
Len, Jessica, Steven & Diane Meyers Doerfler in memory of Jeanette & Julius Meyers and Fannie Smalley
Helene & Lawrence Freed in memory of Melody Rose
Merilee & Alan Freeman in memory of Robert Rubin
Patti & Harvey Gould in honor of the B'nai Mitzvah of Samantha Finkle, Jacob Horne, Jayden Seifer & Levi Wilk
Donna & Harry Hubbard in memory of Harry Beach Hubbard
Linda Jaffee Ilan in memory of Dorothy Jaffee & Robert Abbee Jaffee
Andrew Kotin & Lora Trotsky in memory of Gerald Kotin

Mel Lubowitz & Family in memory of Howard Gordon
Mel Lubowitz & Family in memory of Goldie Kennis
Beth-Ann Martunas in memory of Jacob Y. Young
Kathryn Parvin in appreciation
Avis & Nick Pilson in memory of Wm & Betty Kaplan
Lee & Chuck Radlo in memory of Dorothy McPhillips
Eddy Stein & Family in memory of
Harry Stein, Jeffrey Stein & Sylvia Stein
Jill Goldstein Szafran in memory of Martha Goldstein
Lora Trotsky & Andrew Kotin in memory of Phyllis Kotin
Eleanor Witkes in honor of the birth of Gary Gilman's granddaughter & Melvin Lubowitz' great granddaughter
Gail & Mel Zarr in memory of Min Sclar

Religious School Fund

Paula & Dennis Selvitella in honor of Jacob Horne's Bar Mitzvah
Paula & Dennis Selvitella in honor of Jayden Seifer's Bar Mitzvah

Shelanu Campaign Fund

Carol & Joe DiGregorio in memory of Robert Rubin
Judy, Mark & Sam Hayes in memory of William Hayes and Lester A. Macktez
Marlene & David Persky in memory of Robert Rubin
Regina & Bernard Schultz with gratitude to Carol & Michael Sleeper

Social Action Fund

Debbie & David Bunker
Laura Myers in memory of Sol Myers
Lee & Chuck Radlo in honor of Jayden Seifer's Bar Mitzvah

Sukkot Food Drive

Barbara & Gary Englander
Elisabeth & Darragh Kasakoff

Walls to Bridges Fund

Merilee & Alan Freeman in memory of Robert Rubin
Paula & Dennis Selvitella in memory of Robert Rubin
Judy & Allan Shriber in memory of Robert Rubin
Debbie & Irwin Thomashow in memory of Robert Rubin



OVER 30 YEARS EXPERIENCE

YOUNG'S



TREE SERVICE

***"SPECIALIZING IN
DANGEROUS TREES"***

Fully Insured • Free Estimates

**JOHN H. YOUNG, JR.
508-885-TREE
1-800-660-5358**



LevensonSmile

**Experience Exceptional Dental Care
In Worcester, MA**



Dr. Stanley Levenson DMD
(508) 731-3940
<https://www.levensonsmile.com/>
Office located at 9 Linden St Worcester, MA 01609
Membership plans and payment
options

**LAW OFFICE OF
David T. Bunker, Esquire**



**17 TATTAN FARM ROAD
WORCESTER, MA 01605
508-864-3584
dbunker0453@charter.net**

GENERAL PRACTICE

**Specializing in:
Business Law**

**Condominium Law
Estate Planning**

NORTH OXFORD MILLS Carpet and Flooring

The best values in flooring since 1970

Robert Mack Commercial/Residential Markets

3 Clara Barton Road • North Oxford, MA 01537
P: 508-987-8521 • Cell: 508-887-6656 • Fax: 508-987-3413
rob@northoxfordmills.com • www.northoxfordmills.com



Carpet • Braided Rugs • Hardwood • Ceramic • Rubber • Vinyl • Tile • Linoleum



The
FEINGOLD Companies

Feingold Insurance Agency

Feingold Financial Management

Feingold Employee Benefit Services

Saul F. Feingold

Lisa M. Hirbour

David M. Dimenstein

Two Chestnut Place

508-831-9500

22 Elm Street

800-370-1718

Worcester, MA 01608-1727

FAX: 508-797-4030

On the Web at www.Feingoldco.com

College Resource Associates

Personal Guidance for Students and Families Preparing for College



Empowering Students for College Success



LET US HELP YOU

- * Identify 'best fit' colleges
- * Understand application and testing options
- * Prepare effective essays and resumes
- * Ace admission interviews
- * Manage performing arts requirements
- * Obtain and evaluate financial aid awards

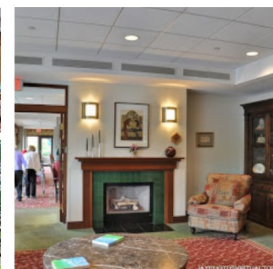
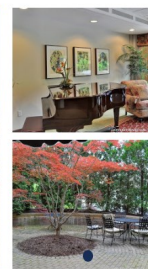
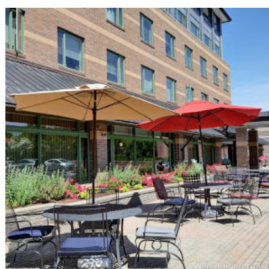
Apply with confidence to colleges that will be thrilled to have YOU as a student!

Contact us at (508) 757-8920 or
Joan@CollegeResourceAssoc.com

Assisted Living

the way it should be.

Spacious Apartments | Beautiful Courtyards | Comfortable Common Areas



- Kosher Dining
- Specialized Memory Care Unit
- Respite Care
- All Inclusive Pricing
- 24/7 Professional, Caring Staff
- Transportation to Appointments
- Social, Cultural & Educational Activities
- Housekeeping & Linen Services
- Onsite Shabbat and Religious Services
- Covid Response That is Diligently Safe & Creatively Fun

*Luxury, Convenience,
and Independence
for Seniors*

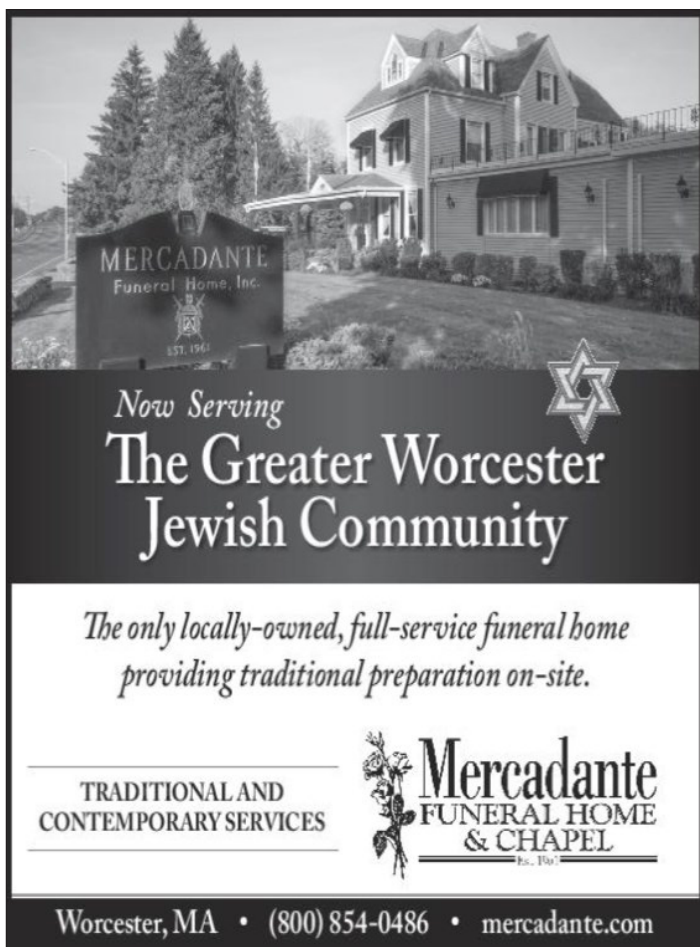


**Eisenberg
Assisted Living**
An Affiliate of Jewish
Healthcare Center

Open for Admissions

631 Salisbury St, Worcester, MA | (508) 713-0549

www.eisenbergal.com



MERCADANTE
Funeral Home, Inc.
EST. 1961

Now Serving
**The Greater Worcester
Jewish Community**

*The only locally-owned, full-service funeral home
providing traditional preparation on-site.*

TRADITIONAL AND
CONTEMPORARY SERVICES

Mercadante
FUNERAL HOME
& CHAPEL
EST. 1961

Worcester, MA • (800) 854-0486 • mercadante.com



Mike Wolpert

www.wolpert.com

18 John Street Place

Worcester, MA 01609

(508) 459-4700

Since our beginning, our business has been *people* and their financial well-being. It's evident in good times, with decisions focused on the long term, and crucial when circumstances become difficult. That continued emphasis on people – our clients, communities, advisors and associates – gives us purpose, strength and a way forward. Today. And *always*.

FRED J SHUSTER
NEWBURY INVESTMENT PARTNERS
Registered Principal, RJFS
fred.shuster@raymondjames.com

22 Elm Street, Suite 330
Worcester, MA 01608
(508) 767-1013
newburyinvestmentpartners.com

RAYMOND JAMES

Securities offered through Raymond James Financial Services, Inc., member FINRA/SIPC. © 2020 Raymond James Financial Services, Inc., member FINRA/SIPC. Investment advisory services offered through Raymond James Financial Services Advisors, Inc.

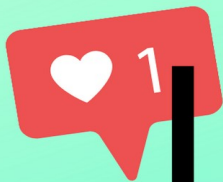
**CELEBRATING A CENTURY OF
SERVICE TO OUR COMMUNITY.**

SEDERLAW

100^{YEARS} ANNIVERSARY

WWW.SEDERLAW.COM | 508.757.7721

WORCESTER | METROWEST



Let's Connect!

Follow us online for the latest updates!



Like us on Facebook:
facebook.com/emanuelsinaiworcester

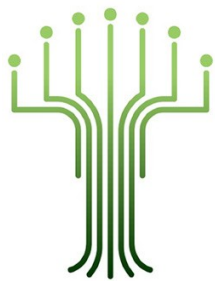
Follow us on Instagram:
[@templemanuelsinai](https://www.instagram.com/templemanuelsinai)



Watch our live streams:
<https://emanuelsinai.org/live-streams>

Read the latest blog:
<https://emanuelsinai.org/category/blog>





Temple Emanuel Sinai
661 Salisbury Street
Worcester, MA 01609
www.emanuelsinai.org

Address Service Requested

Nonprofit
US Postage

PAID

Permit #1707
Worcester, MA

Richard Perlman*

Serving the Jewish communities of Worcester and Worcester County

Miles Funeral Directors of Holden

508.829.4434

Taharah (religious preparation) is performed on-site
by the Worcester Chevra Kadisha



Richard S. Mansfield
Funeral Director
www.milesfuneralhome.com

Contact Richard Perlman
Cell: 508.769.7017

*Lic - Type 6