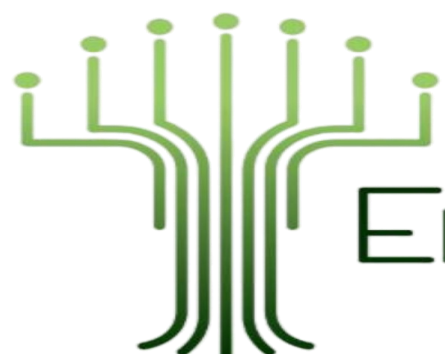


May 2021 - June 2021

IYAR—TAMUZ 5781

Vol. 7 No. 5



Temple Emanuel Sinai

COMMUNITY NEWS

HONORING CANTOR RACHEL FAREWELL CELEBRATION

MARK YOUR CALENDARS!!!

SATURDAY, JUNE 5, 2021 @ 7:30 PM

*Let's all get together
at this virtual send-off
filled with entertainment, nostalgia,
our well-wishes
and a few surprises.*

Watch the eNews for Zoom login information



Join us for our Annual Meeting

Wednesday, June 23 at 7:00 pm

**Be informed with reports from our committees and
election of the new board**

Watch the eNews for Zoom login information

MAY - JUNE 2021 WORSHIP SERVICES

SHABBAT EMOR

Friday, April 30
Candle lighting at 7:28 pm
7:30 PM Shabbat Service

Saturday, May 1
9:00 AM Torah Study
10:30 AM Bat Mitzvah of
Lexi Dworman
Leviticus 21:1-24:23

SHABBAT B'HAR- B'CHUKOTAI

Friday, May 7
Candle lighting at 7:35 pm
5:30 PM Young Families
Kabbalat Shabbat
7:30 PM Shabbat Service

Saturday, May 8
9:00 AM Torah Study
10:30 AM Bar Mitzvah of
Joseph Kantrowitz
Leviticus 25:1-27:34

SHABBAT B'MIDBAR

Friday, May 14
Candle lighting at 7:40 pm
6:30 PM EARLY Shabbat
Service

Saturday, May 15
10:30 AM Torah Study
Numbers 1:1-4:20

SHABBAT NASO

Friday, May 21
Candle lighting at 7:50 pm
7:30 PM Shabbat Service

Saturday, May 22
9:00 AM Torah Study
10:30 AM Bat Mitzvah of
Samantha Finkle
Numbers 4:21-7:89

SHABBAT B'HAALOT'CHA

Friday, May 28
Candle lighting at 7:56 pm
7:30 PM Shabbat Service

Saturday, May 29
10:30 AM Torah Study
Numbers 8:1-12:16

SHABBAT SH'LACH L'CHA

Friday, June 4
Candle lighting at 8:01 pm
7:30 PM Shabbat Service

Saturday, June 5
10:30 AM Torah Study
Numbers 13:1-15:41

SHABBAT KORACH

Friday, June 11
Candle lighting at 8:06 pm
6:30 pm EARLY Shabbat
Service

Saturday, June 12
9:00 AM Torah Study
10:30 AM Bar Mitzvah of
Levi Wilk
Numbers 16:1-18:32

SHABBAT CHUKAT

Friday, June 18
Candle lighting at 8:08 pm
7:30 PM Shabbat Service

Saturday, June 19
10:30 AM Torah Study
Numbers 19:1-22:1

SHABBAT BALAK

Friday, June 25
Candle lighting at 8:10 pm
7:30 PM Shabbat Service

Saturday, June 26
10:30 AM Torah Study
Numbers 22:2-25:9

Minyan is held every Monday
at 5:45 pm via Livestream.
Zoom and Livestream; Zoom login can
be found in eNews

All **WORSHIP SERVICES** are held via
Livestream on our website
(emanuelsinai.org), Zoom, and Facebook
Live on our Facebook page.

TORAH STUDY meets via Zoom meeting.

RABBI'S MESSAGE

I've been thinking a lot about grief recently, the kind of grief that results from the loss of experiences and expectations; a kind of grief that results from chaos and discomfort; grief we feel because we're watching other people suffer; and so much more. I thought that with the wide distribution of a vaccine, some of this grief would be lifted. Anxiety would lessen, and we would celebrate the ability to gather in person with our community.

Unfortunately, what we've discovered is that the prospect of going outside - and inside - with other people is not lessening our anxiety or our grief; the exact opposite, in fact. We have all experienced a collective prolonged trauma, and none of us knew what the consequences would be. Although different for every person, each of us has been clothed with layers of grief. We may not know it, we may even be dealing with it in a healthy way, or we may end up dealing with it many years from now.

One of the concepts I learned in my pastoral education program that has stayed with me the most is the idea that grief is normal. Although this pandemic is not at all normal, the grief we are feeling is normal. Our Jewish mourning rituals provide a way to respond to grief, and they can be helpful for all kinds of loss, not just death. These rituals acknowledge that healing takes time. And it's not healing exactly, for the intensity of the grief never goes away, rather the periods of time between moments of intensity lengthen. We learn to accept our experience and our grief, and we hope to find some kind of meaning in it. We will be changed, our relationships will be changed, and our understanding of the world will be forever changed.

The mourning ritual that stands out most to me is one that many Jews may not be familiar with. After shiva, mourners participate in a ritual of transition to prepare them to enter back into society, albeit in a scaled-back manner. Traditionally, the family is supposed to go outside and walk around their house. Just one rotation. We show gratitude for the home that has kept us safe, not only physically but also emotionally, before we venture back into the world.



How appropriate for the moment when you are ready (and vaccinated) and can participate in social events once again in a more relaxed way. When you feel that you are ready to fully engage into "public" life, walk around your house. Give gratitude for the sacred space that kept you safe, and then move forward.

To end, I want to share this beautiful poem – a recent favorite that many of you have heard me read. It emphasizes that grief has its own schedule for each of us. Something to remember for ourselves and when we interact with others.

Grief Arrives in Its Own Time

It doesn't announce itself or knock
on the door of your heart. Suddenly

it's right behind you
looking with great pity

at the back of your neck
and your shoulders on which

it spends days placing a burden
and lifting it. Grief arrives

in its own sweet time, sweet
because it lets you know that

you are alive, time because
what you are holding becomes

the only day there is: the sun stops
moving, the sky grows utterly quiet

and impossibly blue. Behind the blue
are the stars we can't see and beyond

the stars either dark or light,
both of which are endless.

—Stuart Kestenbaum

PRESIDENT'S MESSAGE

"What is best for TES?" That question has been constantly with me for the last two years. It is not always an easy question to answer, but the support and work of so many others made an answer possible, even in the face of some very difficult problems. I would like to express my heartfelt thanks to all. At the top of my thank you list is my family, especially my husband Mark who kept smiling even when I said, "I have a TES meeting at 7" for the fourth night in a row. Both he and Sara, our daughter, were always ready to listen and in the case of Sara, serve as my proofreader. Throughout my time as president, I have been so fortunate to work with so many wonderful people, all of whom helped to make my time as president a worthwhile and productive experience. Our clergy, Rabbi Valerie and Cantor Rachel, who through their creativity, dedication, and commitment gave me strong clergy partners. In Rabbi Valerie, I found I had a partner who never stopped thinking and planning and whose guidance and opinions I value greatly. Supporting and working with someone as talented as Rabbi Cohen has made me a better leader in my lay leadership role. It is an experience I will treasure long after my time as president comes to an end. The Executive Committee, Paula Selvitella, Susan

Mack, Deb Shear, and Ellen Levitt always showed up ready to solve any problem, to celebrate meaningful services or events, or to bring new ideas forward. Paula has been a great VP1 and without her I would not have made it through the last two years. Thank you as well to the Board members, committee members, and all congregants who continue to do so much to make TES such a wonderful place. The time as president has gone by so quickly, as time has a habit of doing when you are busy. I appreciate the opportunity that the congregation gave me to be president. I have grown, I have learned, I have come to accept that I can't solve all problems; but most of all, I have been able to contribute to a community that means a great deal to me. I know I leave you in good hands, however, and that we as a community will continue to work towards that goal of what is best for TES.

L'Shalom

Meg Hoey, President



SHELANU LEGACY COMMITTEE

One of the many lessons we can take from this very difficult year is that no one knows when they might become seriously ill or when their life might unexpectedly come to an end. Surely this is a good time for us each to examine our legacy, to ensure that our estate is distributed to our loved ones and to the institutions that are most important to us in a way that reflects our values and our priorities.

Temple's Life & Legacy Committee works to encourage pledges of future endowment gifts in estate plans. With several dozen Declarations of Intent (DOIs) already in hand, we want to thank those who have indicated that they will include the Temple in their end of life giving. We know that some others have not yet informed us of their similar intentions.

Securing Flourishing Jewish Tomorrows

Our Shelanu Legacy Society is part of Life & Legacy, a program of the Harold Grinspoon Foundation coordinated locally by the Jewish Federation of Central Mass. Life & Legacy helps selected Jewish communities like ours, and the synagogues and agencies that serve them, to design and implement endowment campaigns to nurture a culture of planned giving and gratitude, guaranteeing a strong Jewish future.

To inquire about how you can participate or to let us know, anonymously if you choose, about a gift to our temple that is already part of your plan, you can contact us at

shelanulegacy@emanuelsinai.org.



CANTOR'S CORNER



These last few months, I have heard from numerous people who have admitted to me that “saying goodbye is hard.” A colleague recently acknowledged that it is always challenging to say goodbye to those you love. As I sit here, trying to find the right “500 words or less” to share for my final newsletter article, the truth is I’d rather not say goodbye either. I’d much prefer to wish you all “shalom” and share a blessing.

In Parshat Naso, God talks to Moses, asking Aaron and his sons to bless the Israelites with the 3-fold benediction. It is fitting that I share this blessing with you:

“May God bless you and protect you!

May God deal kindly and graciously with you!

May God bestow [divine] favor upon you and grant you peace!” I’d like to add my own personal blessing to you:

“May you continue to find joy in joining together in joyful worship to Adonai and making the world a better place.

May you look to your community for support in good times and bad.

May you find peace in body, mind and spirit and help others to do the same!”

It has been my privilege to be your Cantor these past 6 years. I

am grateful for the relationships I have made, the beauty in the prayerful music we have shared and the spiritual connections we have fostered together. It has been my greatest honor to celebrate with you in times of joy and support you in times of sorrow. I am blessed with wonderful connections I have made with each of your families; from my B’nai Mitzvah students and their families, the children in Pray and Play and Religious School and the congregants who I have supported from their very beginning to the end of life’s journey.

I am thankful to have had the opportunity to share with you all the things I love the most; the powerful spirituality of leading worship with Rabbi Valerie, the majesty of singing with the quartet and choir for the high holy days, the truly “Rockin’ Shabbats” with our Tefilah band, the joy of singing with my family, the fun of bringing the Broadway stage to the bimah and turning the sanctuary into a rock and roll hall at Purim.

I am grateful for the partnership with our Temple leadership and staff; thank you to Rabbi Valerie Cohen, Abby Mayou, Tali Mugg, Christa Benoit, Steve Contois & Gabrielle Smith for your wisdom, your guidance and your collaboration. Thank you to all the Temple Presidents and members of the Board of Directors who served our community while I’ve been Cantor; your commitment to Jewish life and the congregation is awe inspiring. Todah Rabbah to the Religious School teachers and madrichim for guiding our

students. And my profound thanks to each of you for your dedication to our community, to our shared Jewish values and for making the world a better place.

May you continue to be both blessed and a blessing.
Shalom!

Cantor Rachel Reef-Simpson

CLERGY & STAFF CONTACT INFORMATION

Temple Office:
(508) 755-1257
Office Hours: M, W, Th, F
9:00 AM - 3:00 PM

Rabbi Valerie Cohen
rabbivaleriecohen@gmail.com

Cantor Rachel Reef-Simpson,
rreef-simpson@emanuelsinai.org

Talia Mugg,
Religious School Director
tmugg@emanuelsinai.org

Abby Mayou, Business Manager
amayou@emanuelsinai.org

Christa Benoit, Office Assistant
cbenoit@emanuelsinai.org

Steve Contois, Caretaker

Gabrielle Smith
Communication Specialist
gsmith@emanuelsinai.org

RELIGIOUS SCHOOL and YOUTH NEWS



Shalom from the Religious School!

I cannot believe that this school year is almost over!

This unique year of our Temple Emanuel Sinai Religious School is coming to a close on Saturday, May 15, and what a special year we have had! I would like to send a sincere Thank You to all who have been involved in making this year a success. Thank you to

our Clergy, Rabbi Valerie, and Cantor Rachel. Your involvement has been/is an integral part of our school.

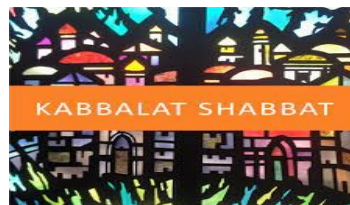
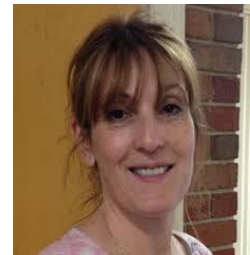
A huge Thank you to our TEACHERS who have helped to implement so many new aspects into our new online curriculum and help grow the love of Judaism in our children during these challenging times, and to our parents and students who adjusted so well to this new online learning reality.

As we are already planning for next year, please make sure to

watch your email for information regarding the 2020 -2021 calendar and registration packet.

Wishing you and your family a safe and healthy summer!

Talia Mugg



YOUNG FAMILIES KABBALAT SHABBAT

For 2nd grade and younger

Join Rabbi Valerie and Cantor Rachel for a family oriented, fast paced, Shabbat experience.

Interactive activities for children and families together

Friday, May 7, 2021

5:30 – 6:00 pm

Watch the eNews for login information.

Mazel Tov B'nai Mitzvah

Lexi Dworman, daughter of Scott Dworman and Nancy Berley
Bat Mitzvah May 1, 2021

Lexi is an avid gymnast who also plays the cello. She loves baking and spending time with friends. She also enjoys spending time with her family and 2 dogs - down the Cape when possible! She is looking forward to returning to Crane Lake Camp for her 7th summer.



Joseph Kantrowitz son of son of Joyce Mandell and Mike Kantrowitz
Bar Mitzvah May 8, 2021

Joseph loves studying science, building new worlds on Minecraft, writing stories, leading teams for Destination Imagination, memorizing the entire soundtrack of Hamilton. writing computer code and watching Cobra Kai. He especially has enjoyed meeting like minded friends for three summers at URJ Sci-Tech East.



Samantha Finkle, daughter of Jill & Mike Finkle
Bat Mitzvah May 22, 2021

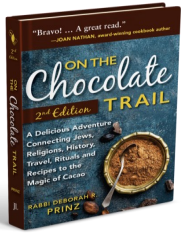
Samantha is a 7th grader in the Hanover Academy at Burncoat Middle School in Worcester. Besides being an excellent student, Sam is an outstanding dancer. She dances on the Greendale Dance Academy competition team and takes dance classes at Burncoat. Outside the studio, Sam loves being a Girl Scout, skiing at Wachusett Mtn. throughout the winter, and enjoying summer camping in the family trailer – especially at Nickerson State Pk. on the Cape. For her Bat Mitzvah project, she has volunteered at Bay State Equine Rescue for almost a year helping to care for neglected horses. Her family is so proud of her for reaching this milestone, especially after having it delayed since last fall.



Levi Samuel Wilk, son of Lindsay and Saul Wilk
Bar Mitzvah June 12, 2021

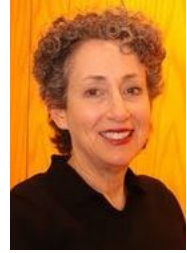
Levi Wilk is a hardworking boy who enjoys reading, traveling, going to the beach and spending time with friends. His Bar Mitzvah project is to help those in need from the ground up. So far he has made food and delivered it to the Friendly House and he has also made bagged lunches to distribute all over the city of Worcester. When he handed out the lunches, he also offered those who were interested gently used shoes that he collected from his neighbors. Levi's bigger project is to collect gently used dress clothes (for men and boys) to donate to Beautiful Souls Inc., an organization in Worcester that outfits men for job interviews, weddings, funerals and so much more. He hopes that these donations will make a difference in people's lives so they can feel good about themselves and move forward to a better place.





A Mother's Day Chocolate Event Sunday, May 9, 2021 at 10:00 am

**On the Chocolate Trail: A Delicious Adventure
Connecting Jews, Religions, History, Travel,
Rituals and Recipes to the Magic of Cacao with
Rabbi Deborah Prinz**



Take a delectable journey through the history of chocolate—a real treat! Explore the surprising Jewish and other religious connections to chocolate in this gastronomic and historical adventure through cultures, countries, centuries and convictions. Deborah Prinz draws from her world travels on the trail of chocolate to enchant chocolate lovers of all backgrounds as she unravels connections in the early chocolate trade and shows how Jewish and other religious values infuse chocolate today.

This program will be held via Zoom, Livestream and Facebook Live

If you missed the deadline to order the Mother's Day gift package but still would like to order Rabbi Prinz's book, please contact the office at 508-755-1257 or Patti Gould at 508-612-0540, pogould@yahoo.com

Meatless Mondays: A Jewish Moral Imperative

According to research reported by The Guardian newspaper, eating less red meat would be a better way for people to cut carbon emissions than giving up their cars.

Their report continues "The heavy impact on the environment of meat production was known but the research shows a new scale and scope of damage, particularly for beef. The popular red meat requires 28 times more land to produce than pork or chicken, 11 times more water and results in five times more climate-warming emissions. When compared to staples like potatoes, wheat, and rice, the impact of beef per calorie is even more extreme, requiring 160 times more land and producing 11 times more greenhouse gases."

Human activity significantly contributes to climate change and environmental destruction. What we choose to eat has a large impact on the environment and meat, in particular, is a major contributor to our carbon footprint.

The moral teachings of Torah are a guide for building an ethical, sustainable community through constraint of our appetites, including our appetite for food. Jewish law provides a precedent for food restrictions because what we eat and how we eat has moral implications.

Torah also teaches that we must care for God's creation as best we can, not only to benefit

ourselves but to ensure that the earth that we pass on to our children and grandchildren will also sustain them. L'dor v'dor, from generation to generation, is a Jewish reminder that our responsibility to community exists across time.

The TES Greening Committee, a subcommittee of the Social Action Committee, with support from our clergy, is promoting a Meatless Monday initiative. Please consider joining us by eliminating meat from your meals for just one day a week. Watch upcoming issues of the TES eNews for more details, recipes, and a contest.



**Tikkun Leil Shavuot: Study with Rabbis and Congregations
Throughout the US and Canada - All Night along!
Sunday, May 16**

6:30 PM Pre-Tikkun “Kabbalat Shavuot”

Music and conversation to welcome Shavuot

Bring your favorite blintz or cheesecake recipe to share!

Check the eNews for Zoom login

7:00 PM Temple Emanuel Sinai is hitching a ride on the *Small Congregations Tikkun Leil Shavuot* program, now for congregations of all sizes!

Check the eNews for registration and link to study session options.

Rabbi Valerie will be teaching at the midnight hour (she is a self-proclaimed “night owl”), but don’t feel obligated to attend her class.

There will be many interesting options to choose and great new teachers to learn from.

We’ll gather back together as a congregation for our

**Shavuot Festival Service and Yizkor
Monday, May 17, 10:30 AM**

Livestream on website

Check the eNews for Zoom login and FaceBook Live links

TEMPLE EMANUEL SINAI BROTHERHOOD (Family & Friends Club)

We are an Auxiliary organization that once limited its membership to men. We continue to morph into an organization that invites both men and women as members. Our primary mission is to serve Temple Emanuel Sinai.

EVENTS

We would like to retain our partnership with Temple's Lifelong Learning Committee to provide free and informative breakfasts. We would like to resume our sponsorship of Coffee House, Dessert and Game Nights with some new formats like Jewish trivia, stories from the stage and, of course, music. We would like to again sponsor our dinner and a movie event and trips to see Rainers games and now Woosox games. **In order to actually do these events, we need two things of equal importance: (a) member dues; and (b) active members willing to take on responsibility to lead and participate in creating these events.**

SCHOLARSHIPS

Our Scholarship Committee has, this past year, awarded significant first year college scholarships to five very worthy TES young people heading out to college. Applications for this year have closed and we look forward to awarding scholarships this year again. We are also able to provide camperships, Religious School scholarships and support for Hebrew High and WESTY trips, all of the latter in conjunction with Temple funds and Federation funds.

We would like to continue to support the Temple financially in multiple ways, as needed.

During the upcoming months we intend to hold virtual meetings, open to all, to discuss new ways we can support both TES men and women. We are eager to hear your suggestions.

We are asking people to renew their Memberships or join Temple Emanuel Sinai Brotherhood d/b/a F&FC. You can find our Membership Invoice and Form as an insert in this newsletter. We have expanded to four (4) categories of Membership:

Benefactors pay \$108 for a single Membership or \$150 for a couple's Membership (take 10% off for 65 years of age or older); and

Regular Members pay \$36 for a single Membership or \$50 for a couple's Membership (take 10% off for 65 years of age or older).

We need your financial support and your hands on support to continue to function for our Temple. Please make your checks payable to "Temple Brotherhood" and send them to:

Brotherhood (Family & Friends Club)

Thank you!

c/o Temple Emanuel Sinai

661 Salisbury Street

Worcester, MA 01609

dbunker0483@charter.net



TEMPLE EMANUEL SINAI BROTHERHOOD (Family & Friends Club)

Dear Member/Congregant:

WE NEED YOUR HELP!

Throughout the year, TESB (Family & Friends Club) supports our Temple:

- Providing Scholarships to Temple Children and Young Adults
- Co-sponsoring free breakfasts with other Temple Committees
- Providing financial support, and in some cases coordinating, the Temple's Celebrations of Sukkot, Chanukah and Folk Shabbats
- Presenting free social events with live entertainment through our free Coffee House, Dessert & Game Nights, barbecues and other events 2-3 times a year.
- Purchasing equipment for the Temple and purchasing training to use the same (defibrillator, Bose Sound system, Books, etc.)
- We are celebrating TESB (F&FC)'s 95th year! TESB (F&FC) continues to work with our Temple to support efforts to build community and promote Jewish values.

PLEASE HELP US CONTINUE THESE TRADITIONS.

Brotherhood will give recognition to all of our contributors in a program book that will be distributed at our events (all contributions may be tax deductible):

PLATINUM CIRCLE - Contributions of **\$250.00** or more will put you in TESB (F&FC)'s platinum circle and you will receive a free Benefactor plus spouse/friend membership allowing you and your significant other to attend our events free.

GOLD CIRCLE - Contributors of **\$150.00 - \$249.00** will be in TESB (F&FC)'s Gold Circle and will receive a free Benefactor's membership in TESB d/b/a F&FC 's (most of our events are free)

SILVER CIRCLE - Contributors of **\$60.00 - \$100.00** will be in TESB (F&FC)'s Silver Circle and receive a free membership in TESB (F&FC)'s (discounts to our events).

DOUBLE CHAI - \$36.00 CHAI - \$18.00 OTHER - \$_____

If you can't help financially or if you want to do more please contact Dave Bunker at dbunker0483@charter.net to discuss volunteer opportunities with TESB (F&FC).

WE NEED YOU!

TES DONATIONS: FEBRUARY 1, 2020– MARCH 31, 2021

Brotherhood Scholarship Funds

Bobbie Hirshberg in memory of Samuel J.
Hirshberg

Mara Yerow in memory of Gertrude Yerow

Lurier Scholarship Fund

Suzanne & Herbert Feldman in memory of
Harold Feldman

Suzanne & Herbert Feldman in memory of
Jennie Narcus Moore

Suzanne & Herbert Feldman in memory of
Charles Freedman

Marsha Deborah & Jeffrey Gordon in memory of
Bennett S. Gordon

Lurier Family in memory of Bennett Gordon

Lurier & Gordon Family in memory of Ida
Feingold

Manuel G. Berman Scholarship Fund

Davida & Joel Berman in memory of Esther
Shulman

Richard Solomon Scholarship Fund

Mickey & Phil Robbins in memory of Anita
Robbins & Florence Solomon

Camp Scholarship Fund

Judy & Allan Shriber in memory of Helene Zoe
Ostrow

Caring Committee Fund

Bobbie & Nick Chase in memory of Herman
Socofsky

Ronna & Jonah Cuker sending Linda Stern get
well wishes

Kathy & Jerry Krieger in memory of Milton Frem

Judy & Hal Schneider in memory of Anna
Federman

Endowment Fund

Frances Gordon in memory of Rose Feingold &
Janet Gordon

Frances Gordon in memory of Simon Goldberg

Frances Gordon in memory of Melvin Richter

Frances Gordon in memory of Louis Gordon

General Fund

Joanne Bartosik in memory of Esther Moranz
Ruth Berman & Family in memory of Tillie Katz
Harriette & Burton Chandler in memory of Eva
Silverman

Louis Burwick in memory of Lilyan Burwick
Cara & David Cohen in memory of Bracha
Kesler

Cynthia & Dennis Cohen in memory of Maurice
Drougen

Cynthia & Dennis Coen in memory of Celia &
Max Resnick

Lawrence Cohen in memory of Milton Frem
Susan & John Connolly in memory of Milton
Michaelson

Brian Cristy in memory of Milton Frem
Ronna & Joe Cuker in memory of Dora
Rubenstein

Ronna & Joe Cuker in memory of Frieda Roth
Ronna & Joe Cuker in memory of Seymour
Cuker

Brenda Dean in memory of Mary Devine
Debbie & Steven Feingold in memory of Dr.
Abram Turow & Sydney Levy

Sue & Herb Feldman in appreciation of Ellen &
Bruce Wahle

Mary & Michael Flanagan in memory of Milton
Frem

Judith Fow in memory of Harold, Sally, Mel &
Andrew Porter

Joan & Richard Freedman in memory of Milton
Frem

Paula Freeman & Jeremy Soybel in memory of
Amanda Soybel

Jane & Stuart Gerhardt in memory of Gloria
Aisenberg

Jane & Stuart Gerhardt in memory of Eleanor
Gerhardt

Carol & Edward Glick in memory of Edith Seder
Riemer

Frances Gordon in memory of Milton Frem

Nancy L. Gould in memory of Hannah R. Gould

DONATIONS CONTINUED

Drs. Noreen & Ivan Green in memory of Milton Frem
Nancy Greenberg in memory of Bruce Glassman
Meg Hoey in memory of Florence Hoey
Alan Iselin in memory of Milton Frem
Jaffe, Yaffe & Feingold P.C. in memory of Milton Frem
Shelley & Gerald Kashuk in memory of Nathan Kashuk
Kerxhalli/Caplan Family in memory of Burton Caplan
Lander Family in memory of Denah Hodes & Stephen F. Hodes
Phyllis Leibman & Steven Alpert in memory of Lillian Leibman
Fredda Levine in memory of Sarah Levine
Gay, Marsha & Susan Lockwood in memory of Howard Lockwood
Melvin Lubowitz & Family in memory of Bessie Lubowitz, Dolores Lubowitz & Jack Lubowitz
Laura Myers in memory of Evelyn Myers
Arline & Glenn Narrow in memory of Milton Frem
Sanford Nemshin in memory of Milton Frem
Angelo Pappas in memory of Milton Frem
Carolyn Phillips in memory of Milton Frem
Lee & Chuck Radlo in memory of Howard Goldman
Lee & Chuck Radlo in memory of Catherine McPhillips
Barbara & Arnold Ravelson in memory of Nate Kaplan
Martha & Melvin Rosenblatt in memory of Milton Frem
Claudia & Les Ross in memory of Lillian Goldin & Helen Ross
Patricia Roy in memory of Phyllis "Sugar" Joseph
Anne & Jonathan Sadick in memory of Betty Kushner
Anne & Jonathan Sadick in memory of Madelyn Levenson
Barbara Sadick in memory of Milton Frem

Carol Sadick in memory of Milton Frem
David Sadick in memory of Moses Sadick
David Sadick in memory of Madelyn Levenson
Stuart Sadick in memory of Madelyn Levenson
Junko & Gary Savage in memory of Louis Savage
Paula & Dennis Selvitella in honor of Merilee & Alan Freeman's new granddaughter, Alma Fay
Marlene & Jerry Sigel in memory of Milton Frem & Michael Solod
Kenda & Dan Smith in memory of Marc P. Smith
Toby Solomon in memory of Yale White
David Stone in memory of Bernard B. Stone
Roberta Sufrin in memory of Lena Shapiro
Kimberly Summerfield in memory of Milton Frem
Karen & Tom Thomsen in memory of Milton Frem
George Tonna in memory of Milton Frem
Mary Trainor in memory of Milton Frem
Vonderful LLC in memory of Milton Frem
Sheila & Ted Weiner in memory of Diana Silva
Shirley White in memory of Milton Frem
Marcia Wolfson in memory of Morris Paul
Mara Yerow in memory of Mary Yerow

High Holy Day Appeal

Amy & James Currie
Sarah Noble-Young & John Young
Carla Royak-Volturo & Greg Volturo

Interfaith Hospitality Network Fund

Leonarda Santiago & Zacharias Rivera

Lifelong Learning Fund

Ronna & Joe Cuker in memory of Howard Goldman & wishing Harry Hubbard a speedy recovery
Patti & Harvey Gould in memory of Leon Ginsburg & Elliott Wahle and in appreciation of \ the Legacy Letter Course
Harriett Katz in memory of Mel Katz
Lee & Chuck Radlo in memory of Betty Radlo
(continued on next page)

DONATIONS CONTINUED

Anne & Jonathan Sadick in memory of Howard Goldman

Stuart Sadick in appreciation to Jay Sherwin for the Legacy Writing Class

Judy & Allan Shriber in appreciation of the bonus session of the Legacy Writing Class

Ma'ot Chitim Fund

Ellen & Bruce Wahle in memory of Rita Toni Wahle

Hazel Wightman

Music Fund

Emily Ritz Gerber in memory of Bessie J. Schorr

Martha Grace in memory of Marcia Herman Pliner

Martha Grace in memory of Milton Pliner

Lee & Chuck Radlo in memory of George McPhillips

Barbara Rossman in memory of Paul Rossman

Judy & Hal Schneider in memory of Sidney Federman

Marilyn Wolpert in memory of Deborah Morris

Prayerbook Fund

Harriette & Burton Chandler in memory of S. Lester Levy

Roberta Sufrin in memory of Louis Budish

Roberta Sufrin in memory of Bertha Budish

Rabbi's Fund

Kimiko Abramoff in memory of Yoshie Ise

Nancy Benjamin in memory of Milton Frem

Merrill Cohen in memory of Bernice Cohen

Anne Diamond in memory of Dorothy Levine

Richard Fox in memory of Melvin Fox

Helene & Lawrence Freed in memory of Sanford Perler

Helene & Lawrence Freed in memory of Samuel Perler & Lynn Serper

Helene & Lawrence Freed in memory of Ruth Perler

Sandra & Moe Goodman in memory of Ely B. Goodman

Sandra & Moe Goodman in memory of Rebecca Jacobson

Sandra & Moe Goodman in memory of David N. Jacobson

Beverly Hurwitz in memory of Sharon Lee Hurwitz

Debbie & Marty Jackson in memory of Joan Jackson

Barton Kamp in memory of Harriet N. Kamp

Eydie Kasendorf in memory of Sandra Wilson

Shelley & Gerry Kashuk in memory of Nathan Witkin

Orland, Trotta & Silverstein Families in memory of Dorothy Orland

Lee & Chuck Radlo in memory of Karen Trainor

Elaine Rosen in memory of Rose Rosenbloom

Stuart Sadick in memory of Alvin Sadick

Deb & Mark Shear in memory of Helene Zoe Ostrow

Sue & Rick Seder in memory of Milton Frem

Edward Stein in memory of Sidney R. Stein & Frances Goldstein

Karen & Tom Thomsen in memory of Eva Tischelman

Religious School Fund

Beth-Ann Martunas in memory of Bessie Coblentz

Judy & Hal Schneider in memory of Anna Federman

Judy & Hal Schneider in memory of Anna Samuels

Paula & Dennis Selvitella in memory of Emily Kapitulik

Deb & Mark Shear in memory of Gloria Aisenberg

Shelanu Campaign Fund

Kathleen & Stuart Glass in memory of Lillian & Benjamin Glass

Marlene & David Persky in memory of Phyllis Yaffe

Barcy Proctor in memory of Cecile R. Proctor

Social Action Fund

Margot Barnet & David Coyne in honor of the Racial Justice Learning & Engagement Program

Deborah Kelly in memory of Charles Kelly

Debi Lang & Family in memory of Melvin Lang

Torah Fund

Lee & Chuck Radlo in memory of Milton Radlo

Lee & Chuck Radlo in honor of Kalman Sinofsky's Bar Mitzvah

Westy Fund

Debbie & Irwin Thomashow in memory of Morris

**Thank You For Your Support!
Together, We Make A Difference.**



In Loving Memory



Michael Solod, former member

Gloria Aisenberg, former teacher at TS

Stanley Dowgiellewicz, brother of Barbara Englander

Harryot Goldstein, family of Ellen & Stephen Cutler

Phyllis Yaffe, mother of Esta Singer

Howard Goldman, father of Donna Hubbard

Stacy Zisook Robinson, friend of Rabbi Valerie Cohen

Lester Paquin, friend of Bobbie & Nick Chase

Shirley Lerner, congregant

Helene Zoe Ostrow, mother of Matthew Ostrow

Rozann Halio, Cantor Rachel's brother's mother-in-law

Richard D. Talbert, uncle of Ben Mantyla, a congregant

Dr. Seymour Solomon, brother-in-law of Janet Solomon

Nathan Paley, uncle of Rabbi Valeri Cohen

Eric Hess, brother of Yael Savage

Levenson Smile

**Experience Exceptional Dental Care
In Worcester, MA**



Dr. Stanley Levenson DMD
(508) 731-3940
<https://www.levensonsmile.com/>
Office located at 9 Linden St Worcester, MA 01609
Membership plans and payment options

College Resource Associates

Personal Guidance for Students and Families Preparing for College



Empowering Students for College Success

LET US HELP YOU

- * Identify 'best fit' colleges
- * Understand application and testing options
- * Prepare effective essays and resumes
- * Ace admission interviews
- * Manage performing arts requirements
- * Obtain and evaluate financial aid awards



**Apply with confidence to colleges that will be
thrilled to have YOU as a student!**

Contact us at (508) 757-8920 or

Joan@CollegeResourceAssoc.com

TELEPHONE
508-485-6653
FAX
508-485-1311

JEFFREY D. LEVINE, M.D.
PRACTICE LIMITED TO THE EYE

65 FREMONT STREET
MARLBOROUGH, MASSACHUSETTS 01752

LAW OFFICE OF David T. Bunker, Esquire



17 TATTAN FARM ROAD
WORCESTER, MA 01605
508-864-3584
dbunker0483@charter.net

GENERAL PRACTICE
Specializing in:
Business Law
Condominium Law
Estate Planning

NORTH OXFORD MILLS

Carpet and Flooring

The best values in flooring since 1970

Robert Mack Commercial/Residential Markets

3 Clara Barton Road • North Oxford, MA 01537
P: 508-987-8521 • Cell: 508-887-6656 • Fax: 508-987-3413
rob@northoxfordmills.com • www.northoxfordmills.com



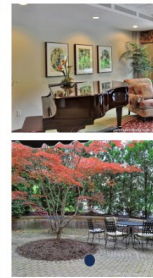
Carpet • Braided Rugs • Hardwood • Ceramic • Rubber • Vinyl • Tile • Linoleum

Assisted Living



the way it should be.

Spacious Apartments | Beautiful Courtyards | Comfortable Common Areas



- Kosher Dining
- Specialized Memory Care Unit
- Respite Care
- All Inclusive Pricing
- 24/7 Professional, Caring Staff
- Transportation to Appointments
- Social, Cultural & Educational Activities
- Housekeeping & Linen Services
- Onsite Shabbat and Religious Services
- Covid Response That is Diligently Safe & Creatively Fun

*Luxury, Convenience,
and Independence
for Seniors*



**Eisenberg
Assisted Living**
An Affiliate of Jewish
Healthcare Center

Open for Admissions

631 Salisbury St, Worcester, MA | (508) 713-0549

www.eisenbergal.com



The
FEINGOLD Companies

Feingold Insurance Agency
Feingold Financial Management
Feingold Employee Benefit Services

Saul F. Feingold
Lisa M. Hirbour
David M. Dimenstein

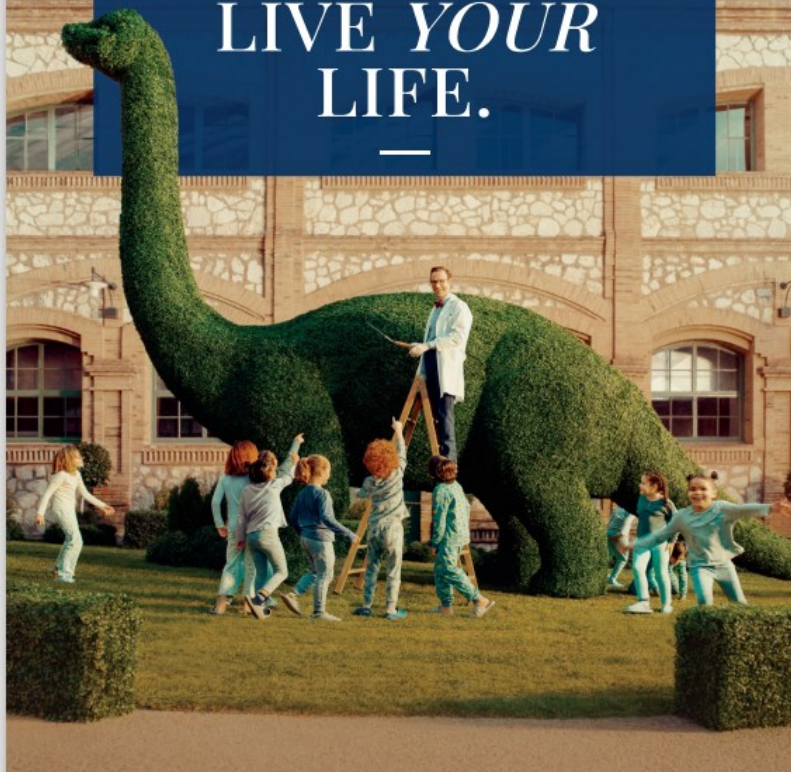
Two Chestnut Place
22 Elm Street
Worcester, MA 01608-1727

508-831-9500
800-370-1718
FAX: 508-797-4030

On the Web at www.Feingoldco.com

Pediatric surgeon. Nonprofit board member. Topiary artist.
A life well planned allows you to

LIVE YOUR LIFE.



While you may not be a pediatric surgeon volunteering your topiary talents at a children's hospital – your life is just as unique. Backed by sophisticated resources, a Raymond James financial advisor can help you plan for what's important to you. That's **LIFE WELL PLANNED.**

Fred J. Shuster, CIMA
Registered Principal, RJFS

22 Elm Street, Suite 330 // Worcester, MA 01608
T 508.767.1013 // TF 877.767.1013
fred.shuster@raymondjames.com
NewburyInvestmentPartners.com



Securities offered through Raymond James Financial Services, Inc., member FINRA/SIPC. © 2020 Raymond James Financial Services, Inc., member FINRA/SIPC. Investment advisory services offered through Raymond James Financial Services Advisors, Inc. 19-BDMKT-4086 BS 3/20



Now Serving
**The Greater Worcester
Jewish Community**

*The only locally-owned, full-service funeral home
providing traditional preparation on-site.*

TRADITIONAL AND
CONTEMPORARY SERVICES



Worcester, MA • (800) 854-0486 • mercadante.com



Mike Wolpert

www.wolpert.com

18 John Street Place

Worcester, MA 01609

(508) 459-4700

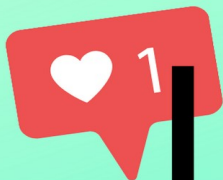
**CELEBRATING A CENTURY OF
SERVICE TO OUR COMMUNITY.**

SEDERLAW

100^{YEARS} ANNIVERSARY

WWW.SEDERLAW.COM | 508.757.7721

WORCESTER | METROWEST



Let's Connect!

Follow us online for the latest updates!



Like us on Facebook:
facebook.com/emanuelsinaiworchester

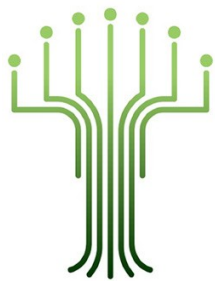
Follow us on Instagram:
[@templemanuelsinai](https://www.instagram.com/templemanuelsinai)



Watch our live streams:
<https://emanuelsinai.org/live-streams>

Read the latest blog:
<https://emanuelsinai.org/category/blog>





Temple Emanuel Sinai
661 Salisbury Street
Worcester, MA 01609
www.emanuelsinai.org

Address Service Requested

Nonprofit
US Postage

PAID

Permit #1707
Worcester, MA

Richard Perlman*

Serving the Jewish communities of Worcester and Worcester County

Miles Funeral Directors of Holden

508.829.4434

Taharah (religious preparation) is performed on-site
by the Worcester Chevra Kadisha



Richard S. Mansfield
Funeral Director
www.milesfuneralhome.com

Contact Richard Perlman
Cell: 508.769.7017

*Lic - Type 6